



paslode.com



grkfasteners.com



tapcon.com



backeronrockon.com



ramsetpat.com



teksscrews.com



redheadanchoring.com



easyanchors.com

Table of Contents

PASLODE®

PASLODE CORDLESS TOOLS	6-9
PASLODE PNEUMATIC TOOLS	10-17
PASLODE MANUAL TOOLS	18-19
PASLODE FUEL AND NAILS	20-25
PASLODE ACCESSORIES & CODE REPORTS	26-27

GRK FASTENERS™

R4™ MULTI-PURPOSE FRAMING & DECKING SCREWS	30-31
RSS™ RUGGED STRUCTURAL SCREWS	32-33
AUGERBOLT™ THROUGH BOLT FASTENING	34
ANGLEPRO™ HIDDEN FASTENING SYSTEM	35
DECK ELITE SCREWS	36-37
FIN/TRIM™ TRIM HEAD SCREWS	38-39
RT COMPOSITE™ TRIM HEAD SCREWS	40-41
STAINLESS STEEL SCREWS	42-43
- 305 Stainless	
- 316 Marine Grade Stainless	
LOW PROFILE CABINET™ SCREWS	44-45
TOP STAR™ SHIM SCREWS	46-47
CALIBURN™ CONCRETE SCREWS	48
MSS™ METAL SIDING SCREWS	49
STAR DRIVE BITS & ACCESSORIES	50

TAPCON®

TAPCON CONCRETE SCREW ANCHORS	54-57
TAPCON+ HEAVY DUTY CONCRETE SCREW ANCHORS	58-59

RED HEAD®

TRUBOLT® CONCRETE WEDGE ANCHORS	60-61
RED HEAD T7+ ADHESIVE ANCHORS	61
RED HEAD CONCRETE ANCHORS	62-63

RAMSET®

RAMSET P.A.T. TOOLS & ACCESSORIES	64-65
-----------------------------------	-------

TEKS®

TEKS ROOFING SCREWS	68-69
TEKS METAL TO METAL SCREWS	70-71
TEKS LATH SCREWS AND WOOD TO METAL SCREWS	72-73

BACKER-ON®, ROCK-ON®

CEMENT BOARD SCREWS, CBS	74-75
--------------------------	-------

E-Z ANCOR®

E-Z ANCOR MULTI-USE ANCHORS	76-77
-----------------------------	-------

FASTENER APPLICATION INFORMATION

FASTENER APPLICATION INFORMATION	78-79
----------------------------------	-------

WARRANTIES

LIABILITY AND WARRANTIES	80-81
--------------------------	-------



REPUTATION IS EVERYTHING

Paslode created the world's first pneumatic nailing system, and has led the category ever since. For over 80 years we've committed to nailing excellence - it's all we do. From engineering and manufacturing to service and support, we deliver the best nailers, nails and fuel in the industry. Nailing systems that deliver unrivaled power, productivity and pride of craftsmanship to get the job done right in less time, every time. This dedication to performance excellence has earned respect and recognition from pros, and a reputation as the brand that knows nailing better than any other. If you're committed to building your reputation, there's no better choice than Paslode.





FREE / C O R D L E S S
2 **SERVICE**
YEAR **PROMISE**

We're so confident in the quality of our cordless tools that we back each one with the industry's best guarantee.

If you have a problem with one of our cordless tools, you can send it to us and we'll fix it for free.



NO QUESTIONS.
NO HASSLES.
NO COSTS.



BETTER THAN BATTERY ALONE

LIGHTER

The power of fuel means no heavy battery. Which makes our nailers the lightest on the market.

MORE DURABLE

Simple self-maintenance/cleaning keeps Paslode cordless nailers running for up to 200,000 shots.

MORE RELIABLE

The simple combustion mechanism means fewer parts and less complicated wiring that can break.

PASLODE® CORDLESS TOOLS FRAMING



Operation Modes:

- Rapid Fire
- Single Fire

30°
FULL HEAD NAIL

FREE CORDLESS
2 YEAR SERVICE
PROMISE

Designed and Assembled in the U.S.A.

CORDLESS XPRO 30 DEGREE FRAMING NAILER

- **Reliable** - Consistently drives nails from the first shot to the last.
- **Productive** - Drives 8x more nails per battery charge than battery only tools.
- **Powerful** - More power than previous XP model for even better drivability in engineered materials.

TOOL SPECIFICATIONS

Model	CF325XPRO24
Part #	906800
Weight	7.9 lbs w/battery
Dimensions	12"L x 4"W x 14.5"H
Nail Capacity	100 (1 Strip)
Nail Range	2" - 3-1/4"
Nail Diameter	.113 / .120 / .131
Nail Type	30° Paslode RounDrive® Full Head
Fuel Type	Cordless Framing Fuel (part# 816008)
Nails per Fuel Cell	Approx. 1,200
Battery	Li-ion battery (part# 902654) and Charger (part# 902667)
Battery Life	6,000 nails per charge
Warranty	1-year full 5-year extended limited



MC
METAL CONNECTOR
NAIL

FREE CORDLESS
2 YEAR SERVICE
PROMISE

Designed and Assembled in the U.S.A.

CORDLESS 1-1/2" POSITIVE PLACEMENT® METAL CONNECTOR NAILER

- **Convenience** - Move freely through the job without a hose or compressor.
- **Maneuverability** - Lightweight and compact design for easy use overhead and in tight spaces.
- **Accuracy** - Quickly and accurately locate holes with the Positive Placement® probe.

TOOL SPECIFICATIONS

Model	CF150-PP
Part #	906200
Weight	6.65 lbs w/battery
Dimensions	12.25"L x 5.5"W x 13.5"H
Nail Capacity	29 (1 Strip)
Nail Range	1-1/2"
Nail Diameter	.131" and .148"
Nail Type	Positive Placement® Metal Connector Nails
Fuel Type	Cordless Metal Connector Fuel (only available in fuel + nail packs)
Nails per Fuel Cell	Approx. 800
Battery	Li-ion battery (part# 902654) and Charger (part# 902667)
Battery Life	9,000 nails per charge
Warranty	1-year full 5-year extended limited

PASLODE® CORDLESS TOOLS

PASLODE® CORDLESS TOOLS

FINISH AND EXTERIOR



16
GA
ANGLED NAIL

FREE / CORDLESS
2
YEAR
SERVICE
PROMISE

Designed and
Assembled in the U.S.A.

CORDLESS 16GA ANGLED FINISH NAILER

- **Durability** - Combustion technology that's proven to last for years of everyday use and exceed 150,000 shots.
- **Productivity** - Narrow tapered body with high visibility no-mar tip and accurate depth control for a consistent, superior finish from shot 1 to shot 1,200.
- **Lightweight** - Compact and lightweight. Best-in-class weight at 4.5 lbs for greater comfort, control, access and ease of use.

TOOL SPECIFICATIONS

Model	IM250A-Li2
Part #	916200
Weight	4.5 lbs w/battery
Dimensions	12"L x 3.5"W x 11.25"H
Nail Capacity	100 (2 Strips)
Nail Range	1-1/4" - 2-1/2"
Nail Type	Angled 16GA - Galvanized
Fuel Type	Cordless Finish Fuel (part# 816007)
Nails per Fuel Cell	Approx. 1,200
Battery	Li-ion battery (part# 902654) and Charger (part #902667)
Battery Life	12,000 nails per charge
Warranty	1-year full 5-year extended limited



16
GA
STRAIGHT NAIL

FREE / CORDLESS
2
YEAR
SERVICE
PROMISE

Designed and
Assembled in the U.S.A.

CORDLESS 16GA STRAIGHT FINISH NAILER

- **Durability** - Combustion technology proven to exceed 150,000 shots
- **Productivity** - Consistent power from shot 1 to 1,200.
- **Lightweight** - The lightest cordless finish nailer in its class. At only 4.6 lbs. it gives pros greater comfort, control, access, and ease of use.

TOOL SPECIFICATIONS

Model	IM250S-Li2
Part #	916500
Weight	4.6 lbs w/battery
Dimensions	10.5"L x 3.5"W x 11.75"H
Nail Capacity	100 (2 Strips)
Nail Range	1-1/4" - 2-1/2"
Nail Type	Straight 16GA - Galvanized
Fuel Type	Cordless Finish Fuel (part# 816007)
Nails per Fuel Cell	Approx. 1,200
Battery	Li-ion battery (part# 902654) and Charger (part #902667)
Battery Life	12,000 nails per charge
Warranty	1-year full 5-year extended limited



18
GA
BRAD NAIL

FREE / CORDLESS
2 YEAR
SERVICE
PROMISE

Designed and
Assembled in the U.S.A.

CORDLESS 18GA BRAD NAILER

- **Maneuverable** - Able to fit in tight spaces where others can't.
- **Precise** - Drives nails flush for high quality craftsmanship.
- **Lightweight** - The lightest cordless nailer on the market makes for reduced fatigue and increased productivity.

TOOL SPECIFICATIONS

Model	CT200S24
Part #	918200
Weight	4.25 lbs w/battery
Dimensions	11"L x 3.5"W x 11.5"H
Nail Capacity	110
Nail Range	5/8" - 2"
Nail Type	18GA - Galvanized
Fuel Type	Cordless Finish Fuel (part# 816007)
Nails per Fuel Cell	Approx. 1,200
Battery	Li-ion battery (part# 902654) and Charger (part #902667)
Battery Life	12,000 nails per charge
Warranty	1-year full 5-year extended limited



0
°
COIL SIDING NAIL

FREE / CORDLESS
2 YEAR
SERVICE
PROMISE

Designed and
Assembled in the U.S.A.

CORDLESS CSF SIDING & FENCING NAILER

- **Reliable** - Fewer jams than 15° wire weld coil nails
- **Convenient** - Faster set up & tear down time than pneumatic coil nailers
- **Productive** - More nails with fuel + battery vs. battery only nailers

TOOL SPECIFICATIONS

Model	CE20024
Part #	919100
Weight	6.65 lbs w/battery
Dimensions	12.2"L x 4.7"W x 13.2"H
Nail Capacity	200 NAILS (1 COIL)
Nail Range	1-1/4" - 2"
Nail Type	Paslode 0° Coil Nails (only available in fuel + nail packs)
Fuel Type	Coil Fuel Sold in Fuel + Nail Packs Part #s 650972, 650973 & 650975
Nails per Fuel Cell	Approx. 800
Battery	Li-ion battery (part# 902654) and Charger (part #902667)
Battery Life	4,500 nails per charge
Warranty	1-year full 5-year extended limited

PASLODE® PNEUMATIC TOOLS

FRAMING



30°
FULL HEAD NAIL

Designed and Assembled in the U.S.A. 

30 DEGREE POWERMASTER PLUS™ FRAMING NAILER

- **Durable** - Built to last and requires less maintenance.
- **Reliable** - Consistently drives nails flush.
- **Powerful** - Proven performance on the toughest jobsites.

TOOL SPECIFICATIONS

Model	F350S
Part #	501000
Weight	8.4 lbs
Dimensions	19.25"L x 6.5"W x 13.25"H
Nail Capacity	2 Strips (84 nails)
Nail Range	2" - 3-1/2"
Nail Diameter	.113 / .120 / .131
Nail Type	30 Degree Paper Tape RounDrive®
Operating Pressure	80-120 psi (5.5 - 8.3 bar)
Warranty	1-year full 5-year extended limited



30°
FULL HEAD NAIL

Designed and Assembled in the U.S.A. 

30 DEGREE COMPACT FRAMING NAILER

- **Compact** - At only 12 inches long, fits easily into tight spaces.
- **Lightweight** - Comfortable and maneuverable when working overhead.
- **Productive** - By-pass follower provides quick re-load for increased productivity.

TOOL SPECIFICATIONS

Model	F325R
Part #	513000
Weight	7.0 lbs
Dimensions	12.3"L x 4.3"W x 12.9"H
Nail Capacity	1 strip (42 nails)
Nail Range	2" - 3-1/4"
Nail Diameter	.113 / .120 / .131
Nail Type	30 Degree Paper Tape RounDrive®
Operating Pressure	90-120 psi (6.2 - 8.3 bar)
Warranty	1-year full 5-year extended limited



PASLODE® PNEUMATIC TOOLS

POSITIVE PLACEMENT® & tetraGRIP™



Designed and Assembled in the U.S.A. 

2 1/2" POSITIVE PLACEMENT® METAL CONNECTOR NAILER

- **Fast and accurate** - The innovative Positive Placement® probe tip guides nails for unmatched hole to hole speed.
- **Versatile** - Drives both 1 1/2" and 2 1/2" Positive Placement® metal connector nails with shank diameters from .131 to .162.
- **Powerful** - Powerful motor drives nails flush, even into engineered lumber.

TOOL SPECIFICATIONS

Model	F250S-PP
Part #	500855
Weight	8.5 lbs
Dimensions	19.5"L x 5"W x 13.88"H
Nail Capacity	44 (2 Strips)
Nail Range	1-1/2" - 2-1/2"
Nail Diameter	.131 / .148 / .162
Nail Type	Positive Placement® Brite, Galvanized
Operating Pressure	80-120 psi (5.5 - 8.3 bar)
Warranty	1-year full 5-year extended limited



Designed and Assembled in the U.S.A. 

1 1/2" POSITIVE PLACEMENT® METAL CONNECTOR NAILER

- **Fast** - Positive Placement® probe for fastest hole to hole speed which provides widest angle of approach.
- **Accurate** - Probing tip guides nails into hardware holes.
- **Powerful** - Drives up to 1 1/2" x .148 Metal Connector Nails flush even into LVL for all day performance.

TOOL SPECIFICATIONS

Model	F150S-PP
Part #	515850
Weight	6.25 lbs
Dimensions	13"L x 3.7"W x 11.7"H
Nail Capacity	29 (1 Strip)
Nail Range	1-1/2"
Nail Diameter	.131 / .148
Nail Type	Positive Placement® Brite, Galvanized
Operating Pressure	90-120 psi (6.2 - 8.3 bar)
Warranty	1-year full 5-year extended limited



Designed and Assembled in the U.S.A.

tetraGRIP™ COIL SUBFLOOR FASTENING SYSTEM

- **Eliminates Nail Induced Floor Squeaks** - tetraGRIP fastener rotates as it drives to bond with the wood fibers. Use of glue between sheathing panels and floor framing is not required.
- **Reduces Builder Warranty Costs** - Fewer call backs & repair costs
- **Reduces Framer Repair Costs** - More efficient than screws and saves the framing company time and labor costs

TOOL SPECIFICATIONS

Model	PF237C
Part #	503000
Weight	8.3 lbs
Dimensions	12.25"L x 5"W x 13.5"H
Nail Capacity	120 (1 Coil)
Nail Range	2-3/8"
Nail Diameter	.113
Nail Type	tetraGRIP™ 0 Degree Coil Subfloor Fastener
Operating Pressure	90-120 psi (6.2 - 8.3 bar)
Warranty	1-year full 5-year extended limited



tetraGRIP™ SUBFLOOR FASTENER							
Part #	Length	Diameter	Shank	Finish	Fasteners/Coil	Coils/ Carton	Fasteners/ Carton
650605	2-3/8"	.113	Barbed	Brite	120	18	2,160



tetraGRIP™ COIL SIDING NAILER SYSTEM

- **Fast** - Install fiber cement siding 20% faster on average. Fast, secure installation without fasteneing to studs.
- **Maneuverability** - The tetraGRIP™ Coil Siding Nailer weighs in at 4.9 lbs and has a compact design for maximum maneuverability.

TOOL SPECIFICATIONS

Model	TG100CSN
Part #	515400
Weight	4.9 lbs
Dimensions	12.25"L x 6"W x 11.5"H
Nail Capacity	120 (1 Coil)
Nail Range	1-1/8"
Nail Diameter	.117
Nail Type	tetraGRIP™ 0 Degree Studless Coil Siding Fastener
Operating Pressure	90-120 psi (6.2 - 8.3 bar)
Warranty	1-year full 5-year extended limited



tetraGRIP™ SIDING FASTENER							
Part #	Length	Dia.	Shank	Finish	Fasteners/Coil	Coils/ Carton	Fasteners/ Carton
650964	1-1/8"	.117	Barbed	Galv. Steel	120	30	3,600

PASLODE® PNEUMATIC TOOLS

FINISH & EXTERIOR



16
GA
STRAIGHT NAIL

16GA STRAIGHT FINISH NAILER

- **Lightweight** - Optimal balance, maximum comfort, and reduced fatigue for increased productivity.
- **Consistent** - Each time the trigger is pulled, the nail drives flush into the applications.
- **Durable** - Oil-free design allows for long term, maintenance free operation which reduced associated costs.

TOOL SPECIFICATIONS

Model	T250S-F16P
Part #	515500
Weight	3.9 lbs
Dimensions	12.3"L x 2.9"W x 11.6"H
Nail Capacity	100 (2 Strips)
Nail Range	1" - 2-1/2"
Magazine Angle	Straight Collation
Nail Type	16GA Galvanized Straight
Operating Pressure	80-120 psi (5.5 - 8.3 bar)
Warranty	1-year full 5-year extended limited



18
GA
BRAD NAIL

18GA STRAIGHT BRAD FINISH NAILER

- **Durability** - Rugged lightweight body withstands high impact even if dropped.
- **Reliability** - Professional-grade design offers consistent drive to finish the job right the first time.
- **Precision** - Smaller nose provides clear line of sight for accurate nail placement.

TOOL SPECIFICATIONS

Model	T200-F18P
Part #	515600
Weight	2.9 lbs
Dimensions	10.04"L x 2.56"W x 10.63"H
Nail Capacity	100 (2 Strips)
Nail Range	5/8" - 2"
Magazine Angle	Straight Collation
Nail Type	18GA Galvanized Straight
Operating Pressure	80-120 psi (5.5 - 8.3 bar)
Warranty	1-year full 5-year extended limited



0 DEGREE COIL SIDING NAILER

- **Consistent** - Reliable depth of drive means greater efficiency on jobsites
- **Clean Finish** - Eliminates wire flagging
- **Lightweight & Balanced** - Increase comfort to work longer and finish jobs faster

TOOL SPECIFICATIONS

Model	PS225C
Part #	515900
Weight	4.5 lbs
Dimensions	12-1/2"L x 5-3/4"W x 12-5/8"H
Nail Capacity	300 (1 Coil)
Nail Range	1-1/2"-2-1/4"
Nail Diameter	.080 - .105
Nail Type	0 Degree Plastic Collated Coil Nails
Operating Pressure	80-120 psi
Warranty	1-year full 5-year extended limited

PASLODE® PNEUMATIC TOOLS

STAPLERS



16
GA
MEDIUM CROWN
STAPLE PASLODE

16GA STANDARD CROWN STAPLER

- **Speed** - Up to 10 staples per second.
- **Power** - Drives flush in all materials.
- **Durable** - Heavy duty all-metal magazine design.

TOOL SPECIFICATIONS

Model	SCS200
Part #	515700
Weight	5.6 lbs
Dimensions	15.1"L x 3.4"W x 11.7"H
Magazine Capacity	150 staples
Staple Range	3/4" - 2"
Staple Type	1/2" Crown 16GA Galvanized
Operating Pressure	80-120 psi (5.5 - 8.3 bar)
Warranty	1-year full 5-year extended limited



16
GA
WIDE CROWN
STAPLE PASLODE

16GA WIDE CROWN STAPLER

- **Speed** - Up to 10 staples per second.
- **Power** - Drives flush in all materials.
- **Durable** - Heavy duty all-metal magazine design.

TOOL SPECIFICATIONS

Model	WCS200
Part #	515800
Weight	5.9 lbs
Dimensions	15.1"L x 3.4"W x 11.7"H
Magazine Capacity	150 staples
Staple Range	3/4" - 2"
Staple Type	15/16" Crown 16GA Galvanized
Operating Pressure	80-120 psi (5.5 - 8.3 bar)
Warranty	1-year full 5-year extended limited



18^{GA}
NARROW CROWN
STAPLE

18GA CAPSTAPLER

- **Convenient** - Staples and caps in one easy step.
- **Consistent Drive Performance** - Saves time on roofing felt and housewrap.
- **Easy Loading** - Open design makes staple and cap reloading a snap.

TOOL SPECIFICATIONS

Model	CS150
Part #	502575
Weight	4.8 lbs
Dimensions	15.5"L x 4"W x 10.5"H
Staple Capacity	90 Staples
Cap Capacity	1 Spool (240 Caps)
Staple Range	1" - 1-1/2"
Staple Type	18GA 3/8" Narrow Crown
Operating Pressure	70-110 psi (4.8 - 7.6 bar)
Warranty	1-year full 5-year extended limited

PASLODE® MANUAL TOOLS

STAPLERS



20GA HAMMER TACKER STAPLER

- **Durable** - Industrial strength design keeps you working for years
- **Professional** - Engineered specifically for professional building applications
- **Reliable** - Reduces tearing in roof paper, insulation and housewrap

TOOL SPECIFICATIONS

Model	HT-550
Part #	1013290
Weight	2 lbs
Dimensions	11.25"L x 1.25"W x 3"H
Magazine Capacity	168 staples (2 strips)
Staple Type	5000 Series
Staple Gauge	20
Staple Crown Width	1/2"
Staple Length	1/4" - 3/8"



20GA COMPRESSION STAPLER

- **Simple** - Install staples with an easy push/squeeze
- **Professional** - Engineered specifically for professional building applications
- **Versatile** - Adjust installation power for the specific job requirements

TOOL SPECIFICATIONS

Model	CS-5000
Part #	1011910
Weight	1.8 lbs
Dimensions	7.5"L x 1.50"W x 4.75"H
Magazine Capacity	84 staples (1 strip)
Staple Type	5000 Series
Staple Gauge	20
Staple Crown Width	1/2"
Staple Length	1/4" - 9/16"



PASLODE® FUEL + NAIL PACKS

FUEL+ NAIL PACKS

FUEL + NAIL PACKS



Power Boost Coating

CORDLESS 30 DEGREE FRAMING FUEL + NAIL PACKS						
Part #	Length	Diameter	Shank	Finish	Nail Qty.	Fuel Cell Qty.
650564	2"	.113	Ring	HDG	1,000	1
650526	2-3/8"	.113	Ring	HDG	1,000	1
650522	2-3/8"	.113	Smooth	Brite	1,000	1
650523	2-3/8"	.113	Ring	Brite	1,000	1
650565	2-3/8"	.113	Ring	Brite	3,000	3
650527	3"	.120	Ring	*HDG	1,000	1
650524	3"	.120	Smooth	*Brite	1,000	1
650631	3"	.120	Smooth	*Brite	3,000	3
650525	3"	.131	Smooth	*Brite	1,000	1
650566	3"	.131	Smooth	*Brite	3,000	3
650535	3-1/4"	.131	Smooth	*Brite	1,000	1
650630	3-1/4"	.131	Smooth	*Brite	3,000	3
650615	3-1/4"	.131	Smooth	*HDG	900	1



CORDLESS POSITIVE PLACEMENT® METAL CONNECTOR FUEL + NAIL PACKS						
Part #	Length	Diameter	Shank	Finish	Nail Qty.	Fuel Cell Qty.
650921	1-1/2"	.131	Smooth	Brite, Heat Treated	800	1
650923	1-1/2"	.131	Smooth	Mech Galv, Heat Treated	800	1
650935	1-1/2"	.131	Smooth	Brite, Heat Treated	1,600	2
650937	1-1/2"	.131	Smooth	Mech Galv, Heat Treated	1,600	2
650922	1-1/2"	.148	Smooth	Brite, Heat Treated	800	1
650924	1-1/2"	.148	Smooth	Mech Galv, Heat Treated	800	1
650936	1-1/2"	.148	Smooth	Brite, Heat Treated	1,600	2
650938	1-1/2"	.148	Smooth	Mech Galv, Heat Treated	1,600	2



CORDLESS CSF 0 DEGREE COIL SIDING + FENCING FUEL + NAIL PACKS						
Part #	Length	Diameter	Shank	Finish	Nail Qty.	Fuel Cell Qty.
650975	1-7/8"	.099	Screw	Aluminum	2,400	3
650972	1-7/8"	.086	Ring	Hot-Dipped	2,400	3
650973	2"	.099	Ring	Hot-Dipped	2,400	3

PASLODE® FRAMING FUEL & NAILS



FRAMING FUEL



PART #	PRODUCT	DESCRIPTION	ASSOCIATED PRODUCT(S)
816008	Cordless Framing Fuel - All Season	Drives 1,200 nails, 27 - month shelf life	906800 - CF325XPRO24 XPro Cordless Framing Nailer 906800DHL - CF325XPRO24 XPro Cordless Framing Nailer 906300 - CFN325XP Cordless XP Framing Nailer 905600 - CF325XP Cordless Framing Nailer 902600 - CF325Li Cordless Framing Nailer 900420 - IMCT Cordless Framing Nailer (with valve)

FRAMING NAILS



30° ROUNDRIE® FRAMING NAILS					
Part #	Length	Diameter	Shank	Finish	#/Box
650272	2"	.113	Smooth	Brite	5,500
650381	2"	.113	Ring	HDG	2,000
650273	2"	.113	Ring	Brite	5,500
650382	2-3/8"	.113	Smooth	HDG	2,000
650237	2-3/8"	.113	Smooth	Brite	5,000
650383	2-3/8"	.113	Ring	HDG	2,000
650238	2-3/8"	.113	Ring	Brite	5,000
650966	2-3/4"	.120	Smooth	Brite	3,500
650836	3"	.120	Smooth	Brite	2,500
650384	3"	.120	Smooth	HDG	2,000
650385	3"	.120	Ring	HDG	2,000
650967	3"	.120	Ring	Brite	3,000
405253	2-1/2"	.131	Smooth	Brite	3,000
650830	3"	.131	Smooth	Brite	2,500
650386	3"	.131	Smooth	HDG	2,000
650387	3"	.131	Ring	HDG	2,000
650839	3-1/4"	.131	Smooth	Brite	2,500
650388	3-1/4"	.131	Smooth	HDG	2,000
650474	3-1/4"	.131	Ring	HDG	2,000
650968	3-1/2"	.131	Smooth	Brite	2,500
650476	3-1/2"	.131	Smooth	HDG	2,000
657381	2"	.113	Ring	HDG	750
657604	2-3/8"	.113	Smooth	Brite	750
657603	2-3/8"	.113	Ring	Brite	750
657383	2-3/8"	.113	Ring	HDG	750
657836	3"	.120	Smooth	Brite	750
657385	3"	.120	Ring	HDG	750

30° ROUNDRIE® FRAMING NAILS (Cont.)

Part #	Length	Diameter	Shank	Finish	#/Box
657830	3"	.131	Smooth	Brite	750
657387	3"	.131	Ring	HDG	750
657388	3-1/4"	.131	Smooth	HDG	750
657839	3-1/4"	.131	Smooth	Brite	750

For use with 906300, 906800, 906800DHL, 501000, 502000 and 513000



Positive Placement® Nail heads marked for easy identification

POSITIVE PLACEMENT® METAL CONNECTOR NAILS

Part #	Length	Dia.	Finish	#/Box
650645	1-1/2"	.131	Brite, Heat Treated	1,000 (4 boxes per carton, 4,000 Qty)
650025	1-1/2"	.131	Brite, Heat Treated	4,000 (Bulk box)
650646	1-1/2"	.148	Brite, Heat Treated	1,000 (3 boxes per carton, 3,000 Qty)
650026	1-1/2"	.148	Brite, Heat Treated	3,000 (Bulk box)
650199	2-1/2"	.131	Brite, Heat Treated	2,500 (Bulk box)
650027	2-1/2"	.148	Brite, Heat Treated	2,500 (Bulk box)
650028	2-1/2"	.162	Brite, Heat Treated	2,000 (Bulk box)
650197	1-1/2"	.131	Mech. Galv, Heat Treated	4,000 (Bulk box)
650481	1-1/2"	.148	Mech. Galv, Heat Treated	500 (4 boxes per carton, 2,000 Qty)
650014	1-1/2"	.148	Mech. Galv, Heat Treated	3,000 (Bulk box)
650106	2-1/2"	.148	Mech. Galv, Heat Treated	2,500 (Bulk box)
650198	2-1/2"	.162	Mech. Galv, Heat Treated	2,000 (Bulk box)

For use with 515850 (1-1/2") and 500855 (1-1/2" + 2-1/2")

PASLODE® FRAMING & FUEL + NAIL PACKS

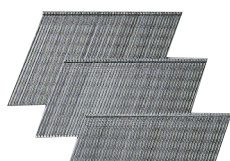
PASLODE® FINISH & EXTERIOR FUEL, NAILS & STAPLES

FINISH FUEL



PART #	PRODUCT	DESCRIPTION	ASSOCIATED PRODUCT(S)
816007	Cordless Finish Fuel (2 pack)	Drives 1,200 nails, 21 - month shelf life	916200 - Cordless 16 Ga Angled Li-ion Finish Nailer 902400 - Cordless 16 Ga Angled Li-ion Finish Nailer 916000 - Cordless 16 Ga Straight Li-ion Finish Nailer 916500 - Cordless 16 Ga Straight Li-ion Finish Nailer 918000 - Cordless 18 Ga Li-ion Brad Nailer 918100 - Cordless 18 Ga Straight Li-ion Brad Nailer 918200 - Cordless 18 Ga Li-ion Brad Nailer

FINISH NAILS



16GA ANGLED FINISH				
Part #	Length	Gauge	Finish	Qty.
650230	1-1/4"	16 GA Angled	Galvanized	2,000
650231	1-1/2"	16 GA Angled	Galvanized	2,000
650047	2"	16 GA Angled	Galvanized	2,000
650232	2-1/2"	16 GA Angled	Galvanized	2,000

6 boxes per carton, 12,000 Qty
For use with 916200, 902400, 900600 and 500910



18GA BRAD NAILS				
Part #	Length	Gauge	Finish	Qty.
650212	1"	18 GA Brad	Galvanized	2,000
650213	1-1/4"	18 GA Brad	Galvanized	2,000
650214	1-1/2"	18 GA Brad	Galvanized	2,000
650215	2"	18 GA Brad	Galvanized	2,000

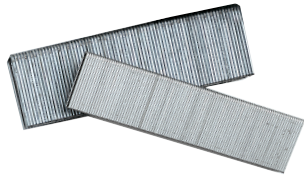
6 boxes per carton, 12,000 Qty
For use with 918000, 918100, 918200, 515600 and 500959



16GA STRAIGHT FINISH				
Part #	Length	Gauge	Finish	Qty.
650282	1-1/4"	16 GA Straight	Galvanized	2,000
650283	1-1/2"	16 GA Straight	Galvanized	2,000
650285	2"	16 GA Straight	Galvanized	2,000
650287	2-1/2"	16 GA Straight	Galvanized	2,000

6 boxes per carton, 12,000 Qty
For use with 916000, 916500, 515500 and 501680

STAPLES

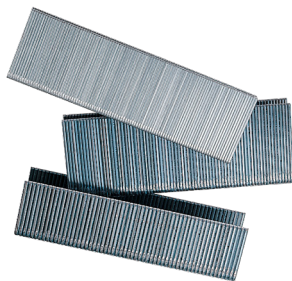


16GA STANDARD (1/2") CROWN STAPLES					
Part #	Length	Wire	Crown	Finish	Qty.
0T5242	1"	16GA	1/2"	Galvanized	16,500
0T5238	1-1/4"	16GA	1/2"	Galvanized	13,500
0T2695	1-1/2"	16GA	1/2"	Galvanized	10,500
0T2250	1-3/4"	16GA	1/2"	Galvanized	9,000
0T2258	2"	16GA	1/2"	Galvanized	7,500

For use with 515700, 900078NT, and 501230

16GA WIDE (15/16") CROWN STAPLES					
Part #	Length	Wire	Crown	Finish	Qty.
404069	7/8"	16GA	15/16"	Galvanized	9,000
404070	1"	16GA	15/16"	Galvanized	9,000
404071	1-1/4"	16GA	15/16"	Galvanized	9,000
0T2855	1-1/2"	16GA	15/16"	Galvanized	10,500
650098	1-3/4"	16GA	15/16"	Galvanized	9,000

For use with 515800, and 501265



20GA (1/2") CROWN 5000 SERIES STAPLES							
Part #	Length	Wire	Crown	Finish	Point	Qty.	Ctns/Case
650929	1/4"	20GA	1/2"	Galvanized	Chisel	5,000	20
650925	5/16"	20GA	1/2"	Galvanized	Chisel	5,000	20
650932	5/16"	20GA	1/2"	Galvanized	Divergent	5,000	20
650926	5/16"	20GA	1/2"	Galvanized	Chisel	5,000	10
650934	5/16"	20GA	1/2"	Galvanized	Chisel	1,000	20
650928	3/8"	20GA	1/2"	Galvanized	Chisel	5,000	20
650930	3/8"	20GA	1/2"	Galvanized	Chisel	5,000	10
650927	1/2"	20GA	1/2"	Galvanized	Chisel	5,000	20
650931	9/16"	20GA	1/2"	Galvanized	Chisel	5,000	20
650933	9/16"	20GA	1/2"	Galvanized	Chisel	5,000	10

For use with 1013290 and 1011910

PASLODE® FINISH & EXTERIOR STAPLES (CONT.) & COIL SIDING NAILS

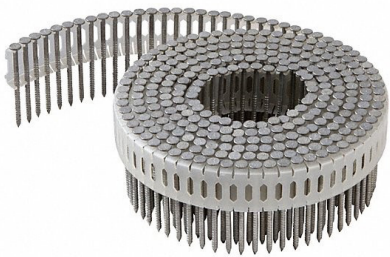
CAP STAPLES



FasCaps PLASTIC CAPS AND STAPLES					
Part #	Length	Wire	Crown	Finish	Qty.
650592	1"	18GA	3/8"	Galvanized	10,080
650597	1-1/2"	18GA	3/8"	Galvanized	8,640

FasCaps are 6 inner boxes per carton
For use with 502575

COIL SIDING NAILS



0 DEGREE COIL SIDING NAILS					
Part #	Length	Dia.	Shank	Finish	Qty.
650955	1-7/8"	.086	Ring	Hot Dipped Galv.	3,600
650958	1-7/8"	.091	Ring	Electro-Galvanized	9,000
650960	1-7/8"	.091	Smooth	Electro-Galvanized	9,000
650954	1-7/8"	.099	Screw	Aluminum	9,000
650959	2"	.092	Smooth	Hot Dipped Galv.	3,600
650956	2-1/4"	.092	Ring	Hot Dipped Galv.	3,600
650957	2-1/4"	.099	Smooth	Electro-Galvanized	7,200
650961	2-1/4"	.099	Ring	Electro-Galvanized	7,200

Note: Coils contain 300 fasteners



PASLODE® ACCESSORIES & CODE REPORTS

CORDLESS & PNEUMATIC

CORDLESS BATTERIES

PART #	PRODUCT	DESCRIPTION	ASSOCIATED PRODUCT(S)
902654	Paslode 7V Li-ion Battery	Full charge in 90 minutes Framing: XPro: 6,000 nails per charge XP: 9,000 nails per charge PPN: 9,000 nails per charge CSF: 4,500 nails per charge Finish: 12,000 nails per charge	906800 - CF325XPRO24 XPro Cordless Framing Nailer 906800DHL- CF325XPRO24 XPro Cordless Framing Nailer 906300 - CFN325XP Cordless XP Framing Nailer 905600 - CF325XP Cordless Framing Nailer 916200 - Cordless 16 Ga Angled Li-ion Finish Nailer 902400 - Cordless 16 Ga Angled Li-ion Finish Nailer 916000 - Cordless 16 Ga Straight Li-ion Finish Nailer 916500 - Cordless 16 Ga Straight Li-ion Finish Nailer 918000 - Cordless 18 Ga Li-ion Brad Nailer 918200 - Cordless 18 Ga Li-ion Brad Nailer 906200 - CF150-PP Cordless 1-1/2" Positive Placement Metal Connector Nailer
902667	Paslode 7V Li-ion Battery Charger	2x faster charge time, 2 minute quick charge drives up to 200 nails	902654 - Paslode 7V Li-ion Battery
219413	Auto Adapter Kit	Charger base and auto adapter cord	All Paslode Li-ion Tools
900200	Paslode Ni-Cd Stick Battery Charger	2 hour charge time	404717, 404717A - Oval Ni-Cd Battery






CORDLESS ACCESSORIES

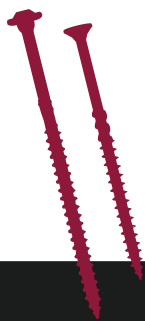
PART #	PRODUCT	DESCRIPTION	ASSOCIATED PRODUCT(S)
219377	Cordless 7V Li-ion Framing Tune-up Kit		905600 - CF325XP Cordless Framing Nailer 906300 - CFN325XP Cordless XP Framing Nailer 902600 - CF325Li Cordless Framing Nailer
219409	Cordless Li-ion Finish/Trim Tune-up Kit		902400 - IM250A-Li 16 Ga Angled Li-ion Finish Nailer 916000 - IM250S-Li 16 Ga Straight Li-ion Finish Nailer 918000 - IM200Li 18 Ga Straight Li-ion Brad Nailer
219348	Cordless Tool Cleaner	12oz. Bottle	All Paslode Cordless Tools
401482	Cordless Nailer Lubrication Oil	4oz. Bottle	All Paslode fuel-powered cordless nailers
902473	No-Mar Tips	3-pack - Angled	902400 - Cordless 16 Ga Angled Finish Nailer 916200 - Cordless 16 Ga Angled Li-ion Finish Nailer
219236	No-Mar Tips	3-pack - Straight	916000 - Cordless 16 Ga Straight Finish Nailer

PNEUMATIC ACCESSORIES

PART #	PRODUCT	DESCRIPTION	ASSOCIATED PRODUCT(S)
219228	No-Mar Nose	Protects wood surfaces	501000 - F350-S PowerMaster Plus

CODE REPORTS

LISTED MANUFACTURER	PRODUCT	ESR NUMBER	QR CODE
ISANTA	Power-Driven Staples and Nails	ESR-1539	
Paslode, An Illinois Tool Works Company	Paslode Positive Placement Nails and Duo-Fast Connector Framing Nails	ESR-2126	
Paslode, An Illinois Tool Works Company	Paslode tetraGRIP nails	ESR-3071	
Paslode, An Illinois Tool Works Company	Paslode Nails	ESR-3072	
Paslode, An Illinois Tool Works Company	Paslode and Duo-Fast Galvanized Nails	ESR-3326	



GRK[®]

FASTENERS[™]

GREATNESS AT EVERY TURN

GRK Fasteners offers a wide selection of fasteners that includes multipurpose, structural, deck, trim, cabinet, composite and stainless screws, but they all have one thing in common—quality.

GRK Fasteners allows users to complete jobs with more productivity. Our patented W-Cut[™] Threadform feature reduces installation torque and allows fast driving and ease of install, the recessed Star Drive eliminates recess stripping for improved productivity, and the Zip-Tip[™] feature eliminates the need for pre-drilling and allows one-step installation. GRK's feature-rich screws drive jobsite productivity and allow users to keep moving from one job to the next.

GRK fasteners are corrosion resistant, approved for use in treated lumber and designed for both interior and exterior use.





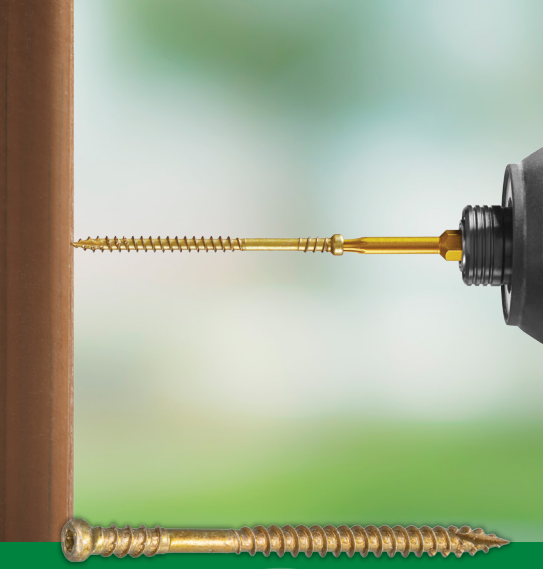
RSS™
RUGGED STRUCTURAL SCREWS



R4™
MULTI-PURPOSE SCREWS



FINISH
TRIM HEAD SCREWS



RT COMPOSITE™
EXTERIOR TRIM SCREWS



AUGERBOLT™
THROUGH BOLT FASTENING



CABINET
WASHERED SCREWS



DECK ELITE
TOP DOWN DECKING SCREWS



ANGLEPRO™
HIDDEN DECK FASTENING

R4™ MULTI-PURPOSE FRAMING & DECKING SCREWS



FASTER DRIVE FOR IMPROVED PRODUCTIVITY

GRK's R4™ Multi-purpose Screw is a versatile, code-approved fastener for hundreds of applications. Its feature-rich design provides a fast and reliable connection every time.

- **Fast Bite Tip:** Provides a fast start for one-step installation
- **Zip-Tip™:** Eliminates pre-drilling
- **W-Cut™:** Low torque, faster drive
- **Precision Fit:** Reduces wobble between R4 screws and GRK bits for improved productivity¹
- **CEE Thread™:** Enlarges hole to reduce splitting²
- **Star Drive Recess:** Zero stripping, with 6 points of contact
- **Underhead Cutting Teeth:** Cuts wood fiber & provides flush seating
- **GRK Head Markings:** Easy identification of genuine GRK screws
- **Climatek™ Indoor/Outdoor Coating:** ICC-ES AC257 code approved for use in treated lumber³
- **Code Approved:** For structural applications (see ESR-3201)⁴
- Some sizes also available in 305 and 316 grade Stainless Steel • For interior / exterior use



ESR-3201



AC257 Treated
Lumber Approved

1. Precision Fit included on #9 and #10 sizes only
2. CEE Thread included on fasteners 2" and longer
3. For cedar, redwood and other naturally protected woods, GRK 305 and 316 stainless steel is recommended
4. ICC Code Approval for #9, #10, and #12 sizes only

	U.S. (Std.) Size (Dia. x Length)	Bulk Part No.	Bulk Box Qty.	Contractor Packs (XL buckets) Part No.	Contractor Packs (XL buckets) Qty.	Pro Pack Part No.	Pro Pack Pail Qty.	Handy Pack Part No.	Handy Pack MC Qty./Screw Qty. (per EA)
T-15	#6 x 1-1/4"	00051	13,000						
	#8 x 1-1/4"					01069	1,300	96080	4 / 110
T-15	#8 x 1-1/2"	00073	6,500			01073	1,000	96085	4 / 110
	#8 x 1-3/4"					01075	925	02075	20 / 100
	#8 x 2"					01077	850	02077	20 / 100
	#8 x 2-1/2"					01079	650	02079	20 / 100
	#9 x 1-1/4"	00091	8,000						
T-25	#9 x 1-1/2"	00095	5,200			01095	820	02095	20 / 100
	#9 x 1-3/4"	00097	4,500						
	#9 x 2"	00099	3,700	120990	990	01099	690	103099	4 / 110
	#9 x 2-1/2"	00101	2,900	121010	900	01101	575	103101	4 / 100
	#9 x 2-3/4"	00103	2,000			01103	480	02103	10 / 100
	#9 x 3-1/8"	00105	1,900	121050	720	01105	425	103105	4 / 80
	#10 x 2"	00131	3,200						
T-25	#10 x 2-1/2"	00133	2,500			01133	470	103133	4 / 80
	#10 x 2-3/4"	00135	2,000						
	#10 x 3-1/8"	00137	1,500	95200	630	01137	350	103137	4 / 70
	#10 x 3-1/2"	00139	1,200			01139	300	02139	10 / 50
	#10 x 4"	00141	1,000	121410	450	01141	270	103141	4 / 50
	#10 x 4-3/4"	00143	800			01143	230	02143	10 / 50
T-25	#12/14 x 5-5/8"	00173	600					96089	4 / 50
	#12/14 x 6-3/8"	00177	1,000					02177	9 / 50
	#12/14 x 8"							02181	9 / 50



APPLICATIONS:

- Multi-Purpose Framing
- Interior and Exterior Remodeling
- Porches and Patios
- Fencing
- Exterior Structures

- Pro Packs need to be ordered in multiples of two
- 2" bit included in Pro Packs. 1" bit with Handy Packs

RSS™ STRUCTURAL RUGGED STRUCTURAL SCREWS



EASY TO INSTALL LAG ALTERNATIVE

GRK's RSS™ Rugged Structural Screw is a structural fastener designed for ease of installation and the strongest of connections. RSS fasteners drive into most woods without the need for pre-drilling. The specially engineered design results in a low-effort installation, especially compared to conventional lag screws.

- **Fast Bite Tip:** Provides a fast start for one-step installation
- **Zip-Tip™:** Eliminates pre-drilling¹
- **W-Cut™:** Low torque, faster drive
- **Precision Fit:** Reduces wobble between RSS screws and GRK bits for improved productivity²
- **Integrated Washer Head:** Maximum clamping force
- **Star Drive Recess:** Zero stripping, with 6 points of contact
- **GRK Head Markings:** Easy identification of genuine GRK screws
- **CEE Thread™:** Enlarges hole to reduce splitting³
- **Climatek™ Indoor/Outdoor Coating:** ICC-ES AC257 code approved for use in treated lumber³
- **Code Approved:** For structural applications (see ESR-2442)⁴
- **Black Structural Screw:** Black coating matches decorative hardware
- Some sizes also available in 305 and 316 grade Stainless Steel • For interior / exterior use



ESR-2442



**AC257 Treated
Lumber Approved**

1. Zip-Tip included on fasteners 2-1/2" and longer
2. Precision Fit included on 5/16" sizes only
3. CEE Thread included on fasteners 3-1/8" and longer
4. For cedar, redwood and other naturally protected woods, GRK 305 and 316 stainless steel is recommended
5. ICC Code Approval for 1/4", 5/16", and 3/8" sizes only

	U.S (Std.) Size (Dia. x Length)	Bulk Part No.	Bulk Box Qty.	Pro Pack Part No.	Pro Pack Qty.	Handy Pack Part No.	Handy Pack MC Qty./Screw Qty. (per EA)	Individually Tagged Part No.	Individually Tagged (Qty./Ctn.)
T-25	#10 x 2-1/2"	10133	1,000			12133	10 / 50		
	#10 x 3-1/8"	10137	800	11137	236	12137	10 / 50		
T-25	1/4" x 1-1/2"	10151	1,000			12151	20 / 50		
	1/4" x 2"	10155	800			12155	10 / 50		
	1/4" x 2-1/2"	10157	700					90305	1/75
	1/4" x 3-1/2"							90306	1/75
	1/4" x 3-1/8"	10161	500			12161	10 / 50		
T-30	5/16" x 2-1/2"	10217	600			12217	9 / 100		
	5/16" x 2-3/4"	10219	500	12219	2 / 100				
	5/16" x 3-1/8"	10221	500	12221	2 / 100	14221	10 / 25	96001	1 / 50
	5/16" x 3-1/2"	10223	500	12223	2 / 100	95307	4 / 45	90307	1 / 50
	5/16" x 4"	10225	400	12225	2 / 100	14225	10 / 25	96005	1 / 50
	5/16" x 5-1/8"	10231	300	12231	9 / 50	14235	10 / 25	96010	1 / 50
	5/16" x 6"	10235	300	12235	9 / 50	14235	10 / 25	96015	1 / 40
T-40	3/8" x 3-1/8"	10273	400						
	3/8" x 4"	10275	400	12275	9 / 50				
	3/8" x 6"	10281	300	12281	2 / 50				
	3/8" x 7-1/4"	10285	200	12285	2 / 50				
	3/8" x 8"	10287	300	12287	2 / 50			96020	1 / 25
	3/8" x 10"	10293	300	12293	2 / 50			96025	1 / 25
	3/8" x 12"	10299	300	12299	2 / 50			96030	1 / 20
	3/8" x 14-1/8"			12307	2 / 50				
	3/8" x 16"	10311	100	12311	2 / 50				

RSS™ BLACK STRUCTURAL SCREW

T-30	5/16" X 3-1/8"			95312	25			95311	1
	5/16" X 4"			95412	25			95411	1
	5/16" X 5-1/8"			95512	25			95511	1
	5/16" X 6"			95612	25			95611	1

- Pro Packs need to be ordered in multiples of two
- Black RSS Pro Packs need to be ordered in multiples of four
- 2" bit included in Pro Packs. 1" bit with Handy Packs

RSS™ JTS - JOIST AND TRUSS SCREW

T-25	1/4" x 5"					93735	9 / 50		
	1/4" x 6-3/4"	91743	300			93743	9 / 50		

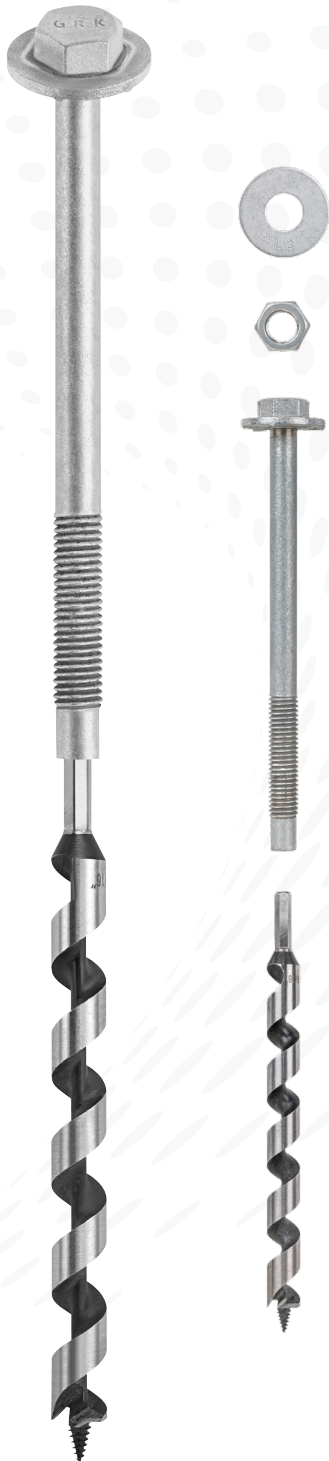


APPLICATIONS:

- Structural Decking
- Multi-ply
- Heavy Duty Framing
- Interior and Exterior Remodeling
- LVL Fastening
- Ledger Boards

AUGERBOLT™

THROUGH BOLT FASTENING



THROUGHBOLTING MADE SIMPLE

AugerBolt™ simplifies the installation process of throughbolts by combining the drilling and install steps and eliminating loose components.

- **Integrated Washer head:** Fewer components
 - **Recessed Tip:** One step install
 - **Auger Drill Bit Included:** For faster drilling
- Nuts and washers included in each package

APPLICATIONS:

- Deck Post to Beam



Treated
Lumber Approved

U.S (Std.) Size (Dia. x Length)	Part No.	Qty.
1/2" x 7"	81271	10
	81272	24
Additional sizes coming soon in 2025		
1/2" x 5"	-	-
1/2" x 6"	-	-

ANGLEPRO™ HIDDEN FASTENING SYSTEM



GET A PREMIUM AESTHETIC FINISH WITH SECURE LONG-LASTING STRENGTH

The AnglePro™ Hidden Fastening System provides a premium aesthetic by eliminating the visibility of screws. The AnglePro™ guides Deck Elite Hidden Deck Fasteners precisely between the gaps of each board leaving a perfect finish.

Deck Elite Hidden Deck Fasteners are designed for use with the AnglePro tool. Combined with the trim head, these fasteners provide an aesthetic finish with the clamping power that rivals top down decking fasteners.

TOOL:

- **Adjustable Gapping:** Adjust topboard gapping between 0.12" - 0.3"
- **Adjustable Width:** Adjust to topboard width from 3.35" - 5.9"
- **Precision Guides:** Quick, accurate fastening
- **Reinforced Handle:** Jobsite Durability

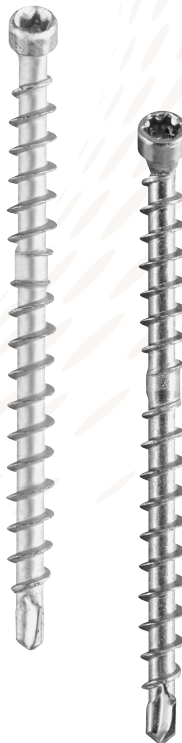
FASTENERS:

- **Drill Point Tip:** Reduces board splitting and provides a clean finish
- **Dual Thread Form:** Delivers superior clamping force, replicating the holding power of topdown fastening
- **Drill Point Tip:** 6 Points of contact eliminates stripping

APPLICATIONS:

- Top Deck Boards

Tool Model	Part No.	Qty.
AnglePro Tool	43126	1
U.S (Std.) Size (Dia. x Length)	Part No.	Qty.
#9 x 2-3/8"	10923	100
#9 x 2-3/8"	19238	350
#9 x 2-3/8" Stainless Steel	39238	200



AC257 Treated
Lumber Approved



HIDDEN FASTENING

AUGERBOLT™

DECK ELITE

DECKING SCREWS





SPEED. QUALITY. ELEVATED CRAFTSMANSHIP

GRK's Deck Elite screws are designed for use in wood deck boards and provide a quick drive and clean finish. Deck Elite screws start immediately in wood with a smooth, fast drive to increase productivity on the job and the tan color of the screw provides an ideal finish.

- **Tan Color:** Provides an ideal finish
- **Fast Bite Tip:** Provides a fast start for one-step installation
- **Zip-Tip™:** Eliminates pre-drilling
- **W-Cut™:** Low torque, faster drive
- **CEE Thread™:** Enlarges hole to reduce splitting¹
- **Star Drive Recess:** Zero stripping, with 6 points of contact
- **GRK Head Markings:** Easy identification of genuine GRK screws
- **Corrosion Resistant Coating:** Resists rust and keeps decks looking new
- For use in wood deck boards, fencing, and deck rails, including pressure treated lumber²
- For interior / exterior use

1. CEE Thread included on fasteners 2" and longer
2. For cedar, redwood and other naturally protected woods, GRK 305 and 316 stainless steel is recommended

	U.S (Std.) Size (Dia. x Length)	Contractor Packs (XL buckets) Part No.	Contractor Packs (XL buckets) Qty.	Pro Pack Part No.	Pro Pack Pail Qty.	Handy Pack Part No.	Handy Pack Qty.
 T-15	#8 x 2"	40803	1,080	10803	540	30803	110
	#9 x 1-5/8"	49159	1,080	19159	540	39159	110
 T-25	#9 x 2-1/2"	49212	800	19212	400	39212	100
	#9 x 3"	40903	700	10903	350	30903	80

- Contractor Packs and Pro Packs need to be ordered in multiples of two
- 2" bit included in Pro Packs. 1" bit with Contractor Packs



APPLICATIONS:

- Deck Boards
- Fencing
- Deck Rails

FIN/TRIM™

FINISHING TRIM HEAD SCREWS

PROFESSIONAL FINISH, PROFESSIONAL LOOK

GRK's Fin/Trim™ screws are an excellent choice for most fine carpentry applications, as well as window extension jambs, joining cabinets and more. A combination of the smallest screw head available and code approved structural performance means the most secure, concealed fastening in the industry.

- **Trim Head:** Clean, finished look
- **Star Drive Recess:** Zero stripping, with 6 points of contact
- **W-Cut™:** Low torque, faster drive
- **Zip-Tip™:** Eliminates pre-drilling
- **Climatek™ Indoor/Outdoor Coating:** ICC-ES AC257 code approved for use in treated lumber¹
- **Code Approved:** For structural applications (see ESR-3201)
- Some sizes also available in 305 and 316 grade Stainless Steel• For interior / exterior use






ESR-3201



AC257 Treated
Lumber Approved

1. For cedar, redwood and other naturally protected woods, GRK 305 and 316 stainless steel is recommended

	U.S (Std.) Size (Dia. x Length)	Bulk Part No.	Bulk Box Qty.	Pro Pack Part No.	Pro Pack Pail Qty.	Handy Pack Part No.	Handy Pack MC Qty./Screw Qty. (per EA)
 T-10	#8 x 1-1/4"					96055	6 / 100
	#8 x 1-1/2"			116724	600	119724	6 / 100
	#8 x 2"			116728	510	119728	6 / 100
	#8 x 2-1/2"	15730	3,500	16730	605	119730	6 / 100
	#8 x 3-1/8"	15734	2,500	115734	300	119734	6 / 100
 T-15	#9 x 4"					117760	4 / 50
	#9 x 5"					117766	4 / 50
White Fin/Trim™							
 T-10	#8 x 2"			16828	605	96060	4 / 100
	#8 x 2-1/2"			16830	505	96065	4 / 100

- Pro Packs need to be ordered in multiples of two
- 2" bit included in Pro Packs. 1" bit with Handy Packs



APPLICATIONS:

- Trim Work
- Cabinets
- Fine Carpentry

RT COMPOSITE™ EXTERIOR TRIM SCREW

INSTALL RIGHT THE FIRST TIME

The RT Composite™ screw is a specially designed fastener for attaching composite and cellular PVC materials. Reverse threading under the head of the fastener helps the screw head disappear beneath the surface of the classic wood composite material while reducing or eliminating the dimple that is common in this substrate.

- **Trim Head:** Clean, finished look
- **Underhead Reverse Thread:** Reduces or eliminates mushrooming
- **Star Drive Recess:** Zero stripping, with 6 points of contact
- **W-Cut™:** Low torque, faster drive
- **Zip-Tip™:** Eliminates pre-drilling
- **Climatek™ Indoor/Outdoor Coating:** ICC-ES AC257 code approved for use in treated lumber¹
- Available in Climatek or White Climatek coated finish
- Some sizes also available in 305 for interior / exterior use






ESR-3201



AC257 Treated
Lumber Approved



1. For cedar, redwood and other naturally protected woods, GRK 305 and 316 stainless steel is recommended

	U.S. (Std.) Size (Dia. x Length)	Pro Pack Part No.	Pro Pack Pail Qty.	Handy Pack Part No.	Handy Pack MC Qty./Screw Qty. (per EA)
 T-10	#8 x 2"	16077	725	119077	6 / 100
	#8 x 2-1/2"	16079	605	119079	6 / 100
	#8 x 3-1/8"	16083	514	119083	6 / 100
 T-15	#9 x 2-1/2"	16101	408		
	#9 x 3-1/8"	16105	348		
White RT Composite™					
 T-10	#8 x 2"	16628	605	17628	20 / 100
	#8 x 2-1/2"	16630	505	96075	4 / 100
	#8 x 3-1/8"			17634	10 / 100

- Pro Packs need to be ordered in multiples of two
- 2" bit included in Pro Packs. 1" bit with Handy Packs



APPLICATIONS:

- Exterior Trim
- cPVC Deck Boards
- Hidden Fastening Systems

STAINLESS STEEL SCREWS

305 CORROSION RESISTANCE FOR HIGH MOISTURE ENVIRONMENTS

316 MARINE GRADE PROTECTION FOR SUPERIOR CORROSION RESISTANCE



GRK's line of stainless steel fasteners feature designs from R4, RSS, Fin/Trim, and RT Composite screws in corrosion and stain resistant material.

GRK recommends 305 stainless steels screws for applications that require superior corrosion resistance in exterior environments with high moisture content, such as docks, boardwalks, pools, and hot tubs. 305 stainless is also recommended for use with cedar, redwood and various other wood species that have higher acid content. 305 stainless steels screws are recommended for applications located more than 1 mile from the coast.

316 stainless steels screws are recommended for applications where extreme corrosion resistance is necessary, such as environments with high exposure to chlorides- such as de-icing salts- and in coastal applications within 1 mile of the coast. They are also suitable for use in chemically treated wood and naturally-protected wood such as cedar and redwood.



ESR-2442



ESR-3201



AC257 Treated
Lumber Approved



305 Stainless Steel

- For use within 1-15 miles of the coast
- For use in cedar, redwood, specialty hardwood, IPE, and Mangaris
- Corrosion resistance for wet environments
- Stain resistant in specialty wood

316 Stainless Steel

- For use within 1 mile of the coast
- Marine-Grade protection for superior corrosion resistance
- Superior Corrosion resistance for coastal environments
- Stain resistant in specialty wood

U.S (Std.) Size (Dia. x Length)	Bulk Part No.	Bulk Box Qty.	Pro Pack Part No.	Pro Pack Pail Qty.	Handy Pack Part No.	Handy Pack MC Qty./Screw Qty. (per EA)
---------------------------------	---------------	---------------	-------------------	--------------------	---------------------	--

R4™ Screws: 305



#10 x 2-1/2"			61633	240	61733	4 / 80
#10 x 3-1/8"	25137	1,500	61637	210	61737	4 / 70

RSS™ Screws: 305



5/16" x 3-1/8"	30221	500			62225	4 / 45
5/16" x 4"	30225	400			132231	4 / 40
5/16" x 5-1/8"						
5/16" x 6"	30235	300				

RT COMPOSITE™ Trim Screws: 305



#8 x 2"			36077	600		
#8 x 2-1/2"			36079	560		
#9 x 2-1/2"			36101	365		

FIN / TRIM™ Screws: 305



#8 x 1-1/2"					37724	20 / 100
#8 x 2"			61728	510	67728	6 / 100
#8 x 2-1/2"			61730	420	67730	6 / 100
#8 x 3-1/8"			36734	385	37734	10 / 100

R4™ Screws: 316



#10 x 2-1/2"					137133	4 / 80
#10 x 3-1/8"					137147	4 / 70

FIN / TRIM™ Screws: 316



#8 x 2-1/2"					147730	6 / 100
-------------	--	--	--	--	---------------	---------

• 2" bit included in Pro Packs. 1" bit with Handy Packs



APPLICATIONS:

- Boardwalks
- Pool Decks
- Spas

LOW PROFILE CABINET™

CABINET SCREWS



QUICK AND SECURE INSTALLATION

GRK's Cabinet screws are designed for use in cabinet construction and installation. Cabinet screws are manufactured in a #8 gauge (4 mm) diameter for universal size convenience.

- **Star Drive Recess:** Zero stripping, with 6 points of contact
- **Zip-Tip™:** Eliminates pre-drilling¹
- **W-Cut™:** Low torque, faster drive
- **Washer Head:** Creates a flush, clean hold for a strong and secure installation
- **Climatek™ Indoor/Outdoor Coating:** ICC-ES AC257 code approved for use in treated lumber²
- **White Cabinet Coating:** Color matched for interior applications
- For interior / exterior³ use



**AC257 Treated
Lumber Approved**

1. Zip-Tip included on fasteners 1-1/4" and longer
2. For cedar, redwood, and other naturally-protected woods, GRK recommends stainless steel fasteners
3. White Cabinet Coating only suitable for interior use



T-15

U.S. (Std.) Size (Dia. x Length)	Bulk Part No.	Bulk Box Qty.	Pro Pack Part No.	Pro Pack Pail Qty.	Handy Pack Part No.	Handy Pack MC Qty./Screw Qty. (per EA)
#8 x 1"					96050	6 / 100
#8 x 1-1/4"	10069	4,000	100069	330	114069	6 / 100
#8 x 1-1/2"	10073	3,000	100073	330	114073	6 / 100
#8 x 2"	10077	2,000	96077	330	113077	4 / 100
#8 x 2-1/2"	10079	1,500	110079	330	113079	4 / 100
#8 x 2-3/4"					113081	4 / 100
#8 x 3-1/8"	10083	1,000	110083	270	114083	6 / 50

White Low Profile™ Cabinet Screws



T-15

#8 x 1-1/4"					120680	6 / 80
#8 x 1-1/2"					120670	6 / 80
#8 x 2-1/2"					120660	6 / 80

- Pro Packs need to be ordered in multiples of two
- 2" bit included in Pro Packs



APPLICATIONS:

- Cabinet Construction & Installations
- Trim & Moulding
- Light-Duty Framing

TOP STAR™ ADJUSTABLE SHIM SCREWS



FOR PLUMB INSTALLATION OF WOODEN DOORS AND WINDOWS. NO MORE SHIMS!

GRK's adjustable Top Star™ shim screw is a screw within a screw that allows you to install wooden doors or windows without the use of shims. The quick and easy system reduces labor and allows for hassle free adjustment to ensure plumb installation.

The 4-point top sleeve provides a secure hold into the frame, while the GRK Star Drive bit is used to make the adjustments needed for a perfect, shim-free installation.

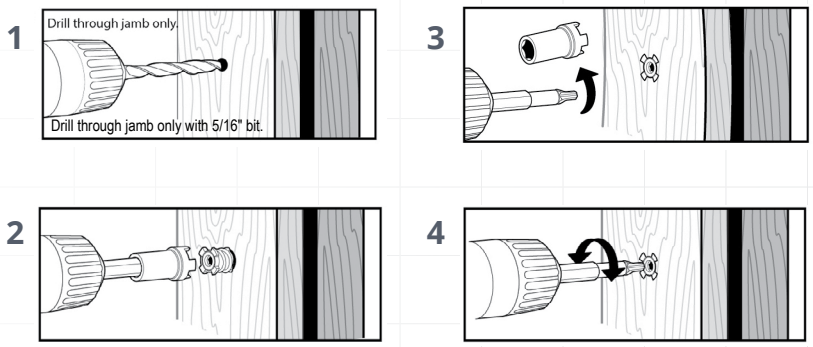
The Top Star's highly-engineered system can be used for installation of wooden doors, windows, insulation, paneling, wall-units, and cabinets.

- **Recessed Star Drive:** Zero stripping, with 6 points of contact
- **4-point 3/8" Diameter Threaded Sleeve** provides a secure hold in your wooden frame
- **Micro-Adjustments** allow for an absolute plumb installation
- **Use with GRK's Top Star™ Crown and T-15 Star Bit System**
- **Zinc Plated** finish for lasting durability
- **For Shim Free Installation** of wooden doors, windows, insulations, paneling, built-in wall units, and cabinets

U.S (Std.) Size (Dia. x Length)	Pro Pack Part No.	Pro Pack Pail Qty.
3/8" x 3-1/8"	20161	100

• Pro Packs need to be ordered in multiples of two

The Complete Top Star™ System Includes:



The Bit drives the Top Star™ into the material when the Crown and Bit are combined. Using the Bit without the Crown adjusts the distance.

The Threaded Sleeve moves independently from the Top Star™ unless locked by the Crown. When locked, the Top Star™ gets driven into the material.

Unlocked, the installed Top Star™ is ready for leveling.



APPLICATIONS:

- Wooden Doors
- Windows
- Insulation

CALIBURN™ CONCRETE SCREW



HEAVY DUTY CONCRETE AND MASONRY FASTENER

Caliburn™ Concrete screws are professionally engineered fasteners with a patented thread design for ease of driving the screw into concrete and similar applications.

- **Star Drive Recess:** Zero stripping, with 6 points of contact
- **Aggressive Heavy Duty Threads** lock into concrete and can be removed/reinserted without screw damage
- **Caliburn™ XL:** washer head design for superior holding power
- **Climatek™ Indoor/Outdoor Coating:** ICC-ES AC257 code approved for use in treated lumber
- Ideal for use in anchoring to concrete or wood to concrete applications including basement framing and sheds

APPLICATIONS:

- Wood to Concrete Framing
- Electrical and Plumbing Fixtures
- Caliburn XL for Heavy Duty Concrete Anchoring



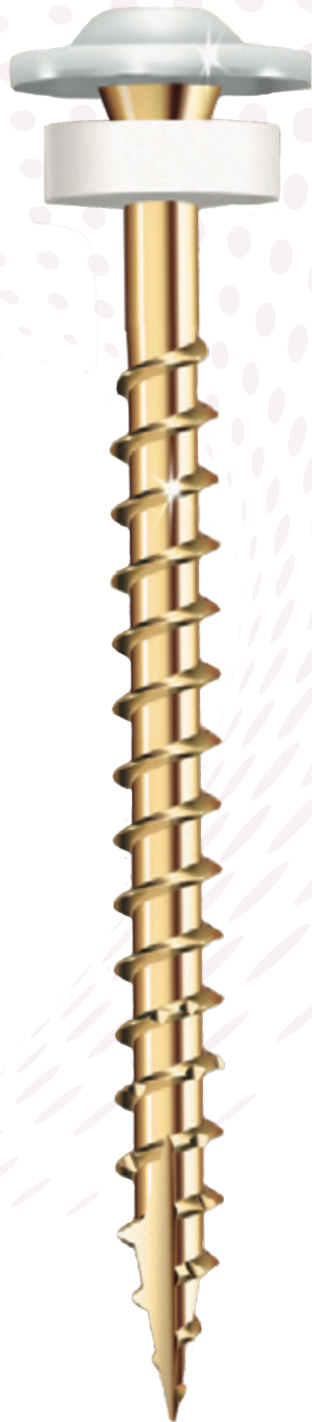
**AC257 Treated
Lumber Approved**



T-40

U.S (Std.) Size (Dia. x Length)	Bulk Part No.	Bulk Box Qty.	Handy Pack Part No.	Handy Pack MC Qty./Screw Qty. (per EA)
Caliburn™ XL				
19/64" x 2-3/4"			57774	10 / 25
19/64" x 3-1/2"	55778	400	57778	10 / 25
19/64" x 5"			57785	10 / 25

- 1" bit included in Handy Packs



POWDER COATED HEAD FOR A CLEAN FINISHED LOOK

This screw has an integrated washer-head and is complemented by a rubber washer below the screw head. This feature also helps protect the washer from prolonged exposure to the sun for long lasting, secure siding installations.

- **White Color, Low Profile Head** produces a clean, finished look which is preferred for moldings, closet organizers, and metal siding
- **Washer Head** increases holding power
- **Rubber Washer:** seals drill hole from the elements
- **W-Cut™ Thread Design** tiny saw blades reduce torque by cutting through the material
- **ZIP-TIP™** for easy starts and no pre-drilling
- For use in interior or exterior applications including metal siding, garage door trim, and even closet organizers. Not for use with treated lumber

APPLICATIONS:

- Metal Siding
- Garage Door Trim
- Closet Organizers



T-25

U.S (Std.) Size (Dia. x Length)	Bulk Part No.	Bulk Box Qty.
#9 x 1-1/2"	40090	3000

- 1" bit included in Handy Packs

STAR DRIVE BITS

CROWN / BIT



Bit Size	Bit Color	Fits	Bulk Part No.	Bulk Box Qty.	Carded Part No.	Carded Qty/per pack
T-10 2" T-10 3"	Yellow Yellow	Trim™ Head #8			187419 87421	2 2
T-15 2" T-15 3"	Red Red	R4™ Screw #6 & 8 Trim™ Head #9 Cabinet™ Screw			187427 87429	2 2
T-20 2"	Purple				187435	2
T-25 2" T-25 3"	Green Green	R4™ #9,10 &12 RSS™ #10 & 1/4" MSS™ #9	86443	25	187443 87445	2 2
T-30 2" T-30 3"	Black Black	RSS™ Structural Screw 5/16" Caliburn™ & Caliburn PH™	86451	25	187451 87453	2 2
T-40 2"	Blue	Caliburn XL™ Screws RSS™ Structural Screw 3/8"			187459	2





STAR DRIVE BITS & ACCESSORIES



Tapcon®

 **DRIVING CONCRETE CONNECTIONS**

Tapcon® is the #1 recognized screw anchor brand in the industry. For decades, Tapcon has helped professionals get their concrete anchoring jobs done right the first time, every time.

The blue, corrosion-resistant coating enables our anchors to withstand the harshest conditions, and their unmatched performance (30% less torque and 20% more holding power) in concrete, block and brick applications make them an excellent alternative to expansion anchors, plugs and lag shields.

For quality, strength, and ease of installation, nobody matches the confidence pros get from using the original true blue screw.





TAPCON®

CONCRETE SCREW ANCHORS



NOTHING ANCHORS LIKE A TAPCON.

Tapcon concrete anchors deliver the ease of use, superior precision, and unparalleled performance that professionals demand.

- **Eliminate bit slips** and increase productivity with star recess on flat head Tapcon anchors
- **Resist head snaps** and spin outs with under-head ribs on hex head Tapcon anchors
- **Superior holding strength** for confidence in a job done right
- **Corrosion resistant**, long lasting performance with Climaseal™ coating
- **WERCS threadform** allows for easy installation across a variety of masonry substrates
- **ICC-ES** recognized for use in concrete and masonry (ESR-2202 & ESR-1671)



ESR-1671



ESR-2202

U.S (Std.) Size (Dia. x Length)	Bucket Part No.	Bucket Qty.	Lg. Clam Part No.	Lg. Clam Qty.	Med. Pack Part No.	Med. Pack Qty.	Small Pack Part No.	Small Pack Qty.
STAR HEAD								
3/16" x 1-1/4"	28550	225	28350	75	28250	25	28150	8
3/16" x 1-3/4"	28555	225	28355	75	28255	25	28155	8
3/16" x 2-1/4"	28560	225	28360	75	28260	25	28160	8
3/16" x 2-3/4"	28565	225	28365	75	28265	25	28165	8
3/16" x 3-1/4"			28307	75			28107	8
1/4" x 1-3/4"	28575	225	28375	75	28275	25	28175	8
1/4" x 2-1/4"			28380	75	28280	25	28180	8
1/4" x 2-3/4"	28585	150	28385	75	28285	25	28185	8
1/4" x 3-3/4"			28395	75	28390	25	28295	8
1/4" x 4"			28304	50	28397	25	28204	8
HEX HEAD								
3/16" x 1-1/4"			24300	75	24200	25	24100	8
3/16" x 1-3/4"			24305	75	24205	25	24105	8
3/16" x 2-3/4"			24310	75	24210	25	24110	8
1/4" x 1-1/4"	24515	225	24315	75	24215	25	24115	8
1/4" x 1-3/4"	24520	225	24320	75	24220	25	24120	8
1/4" x 2-1/4"	24525	225	24325	75	24225	25	24125	8
1/4" x 2-3/4"	24530	150	24330	75	24230	25	24130	8
1/4" x 3-1/4"	24501	150	24301	75			24101	8
1/4" x 3-3/4"			24340	75	24335	25		
1/4" x 4"					24345	25		
BLACK TAPCON STAR HEAD								
3/16" x 1-3/4"			28373	75			28173	8
3/16" x 2-3/4"			28368	75			28168	8
3/16" x 3-3/4"			28393	75			28193	8
BLACK TAPCON HEX HEAD								
1/4" x 1-3/4"			24343	75			24143	8
1/4" x 2-3/4"			24389	75			24189	8
1/4" x 3-3/4"			24394	75			24194	8

• Pre-drill bit included in Star Head and Hex Head packs of 75 quantity and larger



APPLICATIONS:

Star Head

- Furring Strips
- Wood Framing
- Window Frames

Hex Head

- Electrical Boxes

TAPCON®

CONCRETE SCREW ANCHORS

U.S (Std.) Size (Dia. x Length)	Bucket Part No.	Bucket Qty.	Lg. Clam Part No.	Lg. Clam Qty.	Med. Pack Part No.	Med. Pack Qty.	Small Pack Part No.	Small Pack Qty.
WHITE ULTRASHIELD TAPCON								
3/16" x 1-3/4"			28371	75			28171	8
3/16" x 2-1/4"			28372	75			28172	8
3/16" x 2-3/4"			28367	75	28267	25	28167	8
1/4" x 2-3/4"			24388	75	24288	25	24188	8
1/4" x 3-1/4"			24391	75				
1/4" x 3-3/4"			24392	75				
410 STAINLESS STEEL TAPCON								
3/16" x 1-3/4"							26155	8
3/16" x 2-3/4"							26165	8
1/4" x 1-3/4"							26120	8
1/4" x 2-3/4"							26130	8
MAXI-SET TAPCON								
1/4" x 2-1/4"			24326	50				
1/4" x 2-1/4"			24323	50				
STORM GUARD								
1/4" x 2-1/4"					35235	25		
TAPCON DRILL BITS								
5/32" x 3-1/2"							11256	1
5/32" x 4-1/2"							11247	1
5/32" x 5-1/2"					11249	4	11363	1
3/16" x 3-1/2"							11257	1
3/16" x 4-1/2"							11248	1
3/16" x 5-1/2"					11250	4	11362	1
5/32" x 7" SDS							11492	1
3/16" x 7" SDS							11491	1
1/4" x 7" SDS							11493	1
3/8" x 8" SDS							11494	1
1/2" x 10" SDS							11495	1
TAPCON PRO INSTALLATION KIT								
Tapcon Pro Install Tool							79013	1

• Pre-drill bit included in Star Head and Hex Head packs of 75 quantity and larger



TAPCON® CONCRETE SCREW ANCHORS

TAPCON+®

HEAVY DUTY CONCRETE SCREW ANCHORS



STRONGER. FASTER. EASIER.

Tapcon+ unmatched performance in concrete, block and brick applications make them an excellent alternative to expansion anchors, plugs, lag shields and have a blue corrosion resistant coating that enables them to withstand the harshest conditions. That's why when pros look for quality, strength and ease of installation, they choose Tapcon.

- **ICC-ES Approved** for use in uncracked & cracked concrete and seismic conditions (ESR-3699)
- **Heavy-Duty Holding Power** in all concrete conditions
- **Flexibility:** to install closer to the edge & closer together with confidence
- **Precision Fit:** A long-standing reputation for quality, strength, and ease of installation from industry professionals



ESR-3699

U.S (Std.) Size (Dia. x Length)	Pro Pack Part No.	Pro Pack Qty.	Handy Pack Part No.	Pro Pack Pail Qty.	Small Pack Part No.	Small Pack Qty.
5/16" x 2-1/4"			24292	15	24192	4
5/16" x 3"			24293	15	24193	4
3/8" x 1-3/4"	11440	10			50440	2
3/8" x 2-1/4"	11441	10			50441	2
3/8" x 3"	11413	10			50403	2
3/8" x 4"	11414	10			50404	2
3/8" x 5"					50445	2
3/8" x 6"					50446	2
1/2" x 3"	11447	10			50447	2
1/2" x 4"	11420	10			50408	2
1/2" x 5"	11449	10			50449	2
1/2" x 6"	11421	10			50426	2



APPLICATIONS:

- Sill Plates
- Post Cap Connector
- Ledger Board
- Heavy Equipment
- Industrial Racking/Shelving
- Modular Walls
- Machinery

Trubolt WEDGE ANCHORS

HEAVY DUTY CONCRETE ANCHORS



MAXIMUM STRENGTH FOR HEAVY-DUTY CONCRETE ANCHORING

Trubolt Wedge Anchors offer maximum strength and ultimate flexibility making them the PRO choice for heavy-duty anchoring. This wedge anchor features a high-strength body that is built to resist tension and shear loads.

- **ICC-ES Approved** for use in uncracked concrete (ICC-ES-ESR-2251)
- **Heavy-Duty Holding Power** in concrete conditions
- **Fully Threaded Anchor Design** for application versatility
- **Stainless Steel Clip** provides extra corrosion protection
- A long standing reputation for quality, strength, and ease of installation from industry professionals

APPLICATIONS:

- Machinery
- Sill plate installation



Trubolt Wedge Anchor



ESR-2251

T7+ Adhesive Anchor



ESR-3903



ESR-3951

U.S (Std.) Size (Dia. x Length)	Pro Pack Part No.	Pro Pack Qty.	Handy Pack Part No.	Handy Pack Pail Qty.	Poly-Bag Part No.	Poly-Bag Qty.
1/4" x 2-1/4"			12377	25	50080	1
3/8" x 2-1/4"	12367	50	12015	15	50081	1
3/8" x 3"	03014	50			50082	1
3/8" x 3-3/4"	12370	50	12016	15	50083	1
3/8" x 5"			12022	15	50084	1
1/2" x 2-3/4"					50085	1
1/2" x 3-3/4"	12371	25	12017	10	50181	1
1/2" x 4-1/4"	12372	25	12020	10	50086	1
1/2" x 5-1/2"	12373	25			50087	1
1/2" x 7"					50088	1
5/8" x 5"	12310	10			50089	1
5/8" x 6"	03041	10				
5/8" x 7"	03044	10			51030	1
5/8" x 8-1/2"					50305	1
3/4" x 5-1/2"	02992	10			51001	1
HOT-DIPPED GALVANIZED						
1/2" x 5-1/2" HDG			12021	10	50303	1
1/2" x 7" HDG	12029	10			50307	1
5/8" x 6" HDG	03555	10				

T7+ ADHESIVE ANCHORS

HIGH STRENGTH ADHESIVE ANCHORING SOLUTIONS



Red Head T7+ concrete adhesive anchor features a fast cure formula that meets the highest standards of building codes. T7+ adhesive is approved for cracked and uncracked concrete and seismic applications. The versatile formula is easy to dispense at all temperatures and is moisture resistant for damp or submerged applications.

Size (Fl. Oz.)	Part No.	Qty.	Cure Time
9.5 Fl. Oz Cartridge	07112	1	30 mins at 90°F

APPLICATIONS:

- Concrete
- Grout-filled and hollow brick
- Clay tile

RED HEAD® CONCRETE ANCHORS

CONCRETE ANCHORS



SLEEVE ANCHOR

VERSATILE ANCHORING SOLUTIONS FOR CONCRETE & BUILDING

Red Head can help you get any job done right, from heavy-duty ceiling applications to light-duty work in block and brick.

Our sleeve anchor is our most versatile anchor with the ability to fasten in block, brick, masonry, and solid concrete.

For a lighter duty project, Poly-Set and Hammer-Set are great choices for block, brick and concrete and allow for a quick and easy installation. For heavy-duty overhead applications, use our Drop-In anchors. Use the complete family of anchors and SDS bits to ensure precise hole depth and diameter when using our anchors.



HAMMER-SET



DROP-IN

U.S (Std.) Size (Dia. x Length)	Pro Pack Part No.	Pro Pack Qty.	Handy Pack Part No.	Handy Pack Pail Qty.	Poly-Bag Part No.	Poly-Bag Qty.
SLEEVE ANCHORS						
1/4" x 2-1/4" Acorn Hd					50122	1
1/4" x 2-1/4" Threshold Hd					50123	1
1/4" x 3-1/8" Flat Hd					50121	1
5/16" x 1-1/2" Hex Hd					50112	1
5/16" x 2-1/2" Hex Hd					50113	1
3/8" x 1-7/8" Hex Hd					50114	1
3/8" x 3" Hex Hd	11281	50	11013	15	50115	1
1/2" x 2-1/4" Hex Hd					50116	1
1/2" x 3" Hex Hd	11283	25	11014	10	50117	1
1/2" x 4" Hex Hd	11285	25	11018	10	50118	1
5/8" x 4-1/4" Hex Hd					50119	1
5/8" x 6" Hex Hd					50120	1
HAMMER-SET ANCHORS						
1/4" x 1"	35300	75	35200	25		
1/4" x 1-1/2"	35303	50	35203	15		
1/4" x 2"	35305	50	35205	15		
1/4" x 3"	35207	25				
DROP-IN ANCHORS						
3/8" Anchor	01891	50			50125	1
1/2" Anchor					50126	1
3/8" Setting Tool					07499	1
1/2" Setting Tool					07501	1



APPLICATIONS:

- Conduit Clips
- Drywall tracks
- Curtain rods
- Shelving
- Shelf Ledgers
- Racking
- Secure Transformers
- Light Fixtures



Cobra+



MasterShot



TriggerShot



HammerShot



ESR-1799



ESR-2690

DURABLE. STURDY. POWERFUL.

From concrete to steel, Ramset has the tool to help you get the job done on time. Ramset is designed with speed and productivity in mind. With innovative solutions we provide you with the best anchoring experience.

- **Powder actuated tools for concrete or steel**
- **Drives jobsite speed** through quick and efficient fastening
- **Market leading tool innovations** help you get the job done right
- The Powder Actuated Tool choice for PROs

Item/Tool	Part No.	Qty.
Cobra+ .27 Caliber Semi-Automatic Powder Actuated Tool	16944	1
MasterShot .22 Caliber Single-Shot Powder Actuated Tool	40088	1
TriggerShot .22 Caliber Single-Shot Powder Actuated Tool	40066	1
HammerShot .22 Caliber Single-Shot Powder Actuated Tool	00022	1

U.S (Std.) Size (Dia. x Length)	Pro Pack Part No.	Pro Pack Qty.	Handy Pack Part No.	Handy Pack Pail Qty.				
DRIVE PINS								
.300 x 1/2"	06171	100						
.300 x 3/4"	00747	100						
.300 x 1"	00759	100						
.300 x 1-1/2"	00774	100						
.300 x 2"	00780	100						
.300 x 2-1/2"	00786	100	00787	25				
.300 x 3"	00794	100						
DRIVE PINS WITH WASHERS								
.300 x 1"	00797	100						
.300 x 1-1/2"	00803	100	00804	25				
.300 x 1-1/4"	00800	100						
.300 x 2"	00806	100						
.300 x 2-1/2"	00809	100	00810 07887	15				
.300 x 3"	07886	100		15				
RAMGUARD DRIVE PINS FOR USE IN TREATED LUMBER								
.300 x 2-1/2"	09167	100						
.300 x 2-1/2" with Washers	09173	100						
.300 x 3" with Washers	09176	100						
Caliber	Color	Type	Strip Load Part No.	Qty.	Single Shot Box Pt. #	Single Shot Box Qty.	Single Shot Blister pt.#	Single Shot Blister Qty.
.22	Brown	Powder			00594	100		
.22	Green	Powder			00601	100		
.22	Yellow	Powder			00607	100		
.27	Green	Strip	00652	100				
.27	Yellow	Strip	00667	100				
.27	Red	Strip	00682	100				



APPLICATIONS:

- 2 x 4 framing
- Furring strips
- Attaching electrical boxes



Teks®

Teks was established in 1967 with the introduction of the original self-drilling screw. Since then, we have continued to innovate and provide value-added metal fastening solutions to the construction market.

We take pride in our commitment to operational excellence, superior service and new product development. That has guided the company through decades of growth by meeting the ever-changing needs of the residential/renovation construction industry. Focusing on the needs of our end-users enables us to optimize our product offering and service based on their requirements.



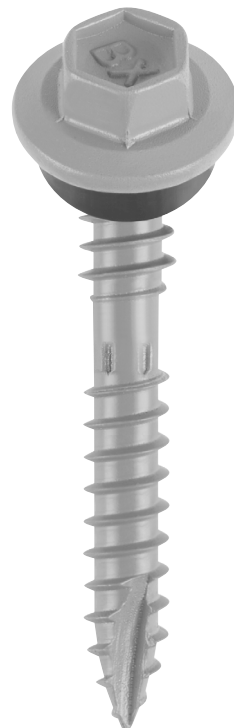
TEKS® METAL FASTENERS

ROOFING SCREWS



**Teks Painted
Roofing Screw**

**Teks Roofing
Screw**



**Teks Elite
Roofing Screw**

TEKS ROOFING SCREWS

Teks Roofing Screws provide secure metal to metal fastening with strong holding power, without need to pre-drill.

- The **self-sealing neoprene washer** provides a waterproof seal.
- The **premium finish** provides exceptional corrosion resistance in harsh outdoor environments.

Teks painted roofing screws are designed for fastening green or white metal roofing and siding panels with a perfect color match that provides a clean look and quality finish.

- **Full head paint coverage**
- Incorporates durable and long lasting liquid paint
- **High grade steel**
- **Weather tight seal**

The Elite screws are trusted for their superior drilling performance, fast installation and holding power – making them the go-to screw for pros who want unparalleled performance and superior results.

- **Maxiseal™ Washer:** Integrated washer head with a large EPDM rubber washer for better waterproofing - even at an angle.
- **Shankguard™:** Improved under-roof corrosion resistance.
- **Hi-grip™* Threading:** Prevents water entry and over-drilling
*Not available on 1" screws
- **Climacoat Coating:** No streaking or rust from corrosion
- Available in drill point and sharp point

U.S (Std.) Size (Dia. x Length)	Pro Pack Part No.	Pro Pack Pail Qty.	Handy Pack Part No.	Handy Pack Qty.
TEKS® ROOFING SCREWS				
HEX WASHER HEAD / SHARP POINT (METAL TO WOOD)				
9 x 1"	21401	360	21400	120
9 x 1-1/2"	21406	400	21404	100
HEX WASHER HEAD / DRILL POINT (METAL TO METAL)				
12 x 3/4"			21408	90
12 x 1"	21418	400	21412	80
12 x 1-1/2"	21422	300	21419	75
12 x 3"			21417	40
TEKS® PAINTED ROOFING SCREWS (SHARP POINT)				
9 x 1-1/2" (Green)			21414	100
9 x 1-1/2" (White)			21424	100
TEKS® ELITE PREMIUM ROOFING SCREWS				
SHARP POINT				
10 x 1-1/2"	21453	300	21452	100
12 x 1"	21450	120		
DRILL POINT				
12 x 1"			21470	80
12 x 1-1/2"	21473	225	21472	75

APPLICATIONS



ROOFING SCREWS:

- Ideal for attaching metal roofing and siding
- Sharp point for use in metal to wood applications
- Drill point for use in metal to metal applications

TEKS® METAL FASTENERS

METAL TO METAL SCREWS



SECURELY FASTEN METAL WITH SPEED

Teks® fasteners are offered in sharp and drill points that easily penetrate light to heavy gauge metal and wood. Professionals no longer have to struggle when engaging their work surface.

Teks® fasteners are offered in a wide variety of head styles to meet professionals installation needs. No tool slippage or cam-outs even with old sockets and worn bits. Professionals can drill, tap, and fasten – all in one motion.

- **Drive surface and recess:** Reduces cam-outs to prevent slipping during installation
- **Drill Points:** Self-drills through light to heavy gauge metal with ease
- **Sharp Points:** Self-pierces into light gauge metal to start drilling faster
- **Self-Tapping Threads:** Taps their own threads to provide less effort when fastening into metal
- **Corrosion Resistant Finish:** Protects the job's appearance with long lasting coating

APPLICATIONS



METAL TO METAL:

- Attaching HVAC
- Electrical
- Metal framing
- General metal to metal applications

U.S (Std.) Size (Dia. x Length)	Pro Pack Part No.	Pro Pack Pail Qty.	Handy Pack Part No.	Handy Pack Qty.
TEKS® METAL TO METAL SCREWS				
HEX WASHER HEAD / DRILL POINT (METAL TO METAL)				
8 x 1/2"			21308	280
8 x 3/4"			21312	180
8 x 1"			21316	170
10 x 5/8"			21396	170
10 x 3/4"	21322	450	21320	150
10 x 1"			21328	140
10 x 1-1/2"			21332	90
12 x 3/4"			21336	120
12 x 1"	21341	400	21340	100
12 x 1-1/2"			21344	80
12 x 2"			21348	60
12/14 x 2"			21820	60
14 x 3/4"			21349	100
14 x 1"			21351	60
14 x 1-1/2"			21352	50
14 x 2-1/2"	21358	120	21356	30
HEX WASHER HEAD / SHARP POINT (METAL TO METAL)				
6 x 1/2"			21301	320
8 x 1-1/2"			21318	85
10 x 3/4"			21327	150
PAN HEAD / DRILL POINT (METAL TO METAL)				
8 x 1/2"			21360	300
8 x 3/4"			21364	240
10 x 3/4"			21372	170
PAN HEAD / SHARP POINT (METAL TO METAL)				
6 x 1/2"			21359	300
PANCAKE HEAD / DRILL POINT (METAL TO METAL)				
10 x 5/8"			21376	190

TEKS® METAL FASTENERS

LATH SCREWS AND WOOD TO METAL SCREWS



LATH SCREW



WOOD TO METAL SCREW

Teks Lath Screws provide secure metal-to-metal and metal-to-wood fastening with strong holding power, without the need to pre-drill.

- **Lath head:** Lath Screws feature a low-profile head for a semi-flush finish for virtually any application
- **Self-tapping threads:** Ensure strong holding power
- **Zinc plated finish:** Protects the job's appearance.

Teks Wood-to-Metal screws help you secure wood to metal without pre-drilling. The special wings ream a hole in the wood to prevent thread engagement during drilling; these wings break away when self-tapping into metal providing a secure hold.

- **Precision point with wings:** Designed to drill, tap, and fasten all in one motion
- **Climacoat premium coating:** Provides a long life finish for exterior applications
- **High performance drive:** Surfaces reduce cam-outs to penetrate surface the first time for easy installation
- **Wings:** Ream a hole in the wood to prevent thread engagement and break away when self-tapping into metal

APPLICATIONS



LATH SCREWS:

- Attaching lath to wood or steel studs for stucco/plaster applications
- Attaching pre-drilled metal brackets to post-framing
- Any general applications requiring a wide, low-profile head



WOOD TO METAL:

- Attaching roof/subfloor decking
- Attaching trailer beds to frame
- Attaching wood headers to steel frame

U.S (Std.) Size (Dia. x Length)	Pro Pack Part No.	Pro Pack Pail Qty.	Handy Pack Part No.	Handy Pack Qty.
TEKS® LATH SCREWS				
MODIFIED TRUSS HEAD / SHARP POINT (METAL OR LATH TO WOOD)				
8 x 1/2"			21500	260
8 x 3/4"	21506	600	21504	200
8 x 1"	21510	510	21508	170
8 x 1-1/4"			21512	140
8 x 1-5/8"			21516	120
8 x 2"			21518	100
8 x 2-1/2"			21519	80
MODIFIED TRUSS HEAD / DRILL POINT (LATH OR METAL TO METAL)				
8 x 1/2"			21520	260
8 x 3/4"	21525	600	21524	200
8 x 1"	21530	510	21528	170
8 x 1-1/4"			21532	140
8 x 1-5/8"			21536	120
8 x 2"			21538	100
8 x 2-1/2"			21540	80
TEKS® WOOD TO METAL SCREWS				
PHILLIPS FLAT HEAD / DRILL POINT W/REAMER WINGS (WOOD TO METAL)				
1/4-20 x 3"			21378	40
10 x 1-7/16"	21381	300	21380	100
12 x 2-3/4"	21386	200	21384	40

BACKER-ON® ROCK-ON®

CEMENT BOARD SCREWS



CEMENT BOARDS FASTENED RIGHT

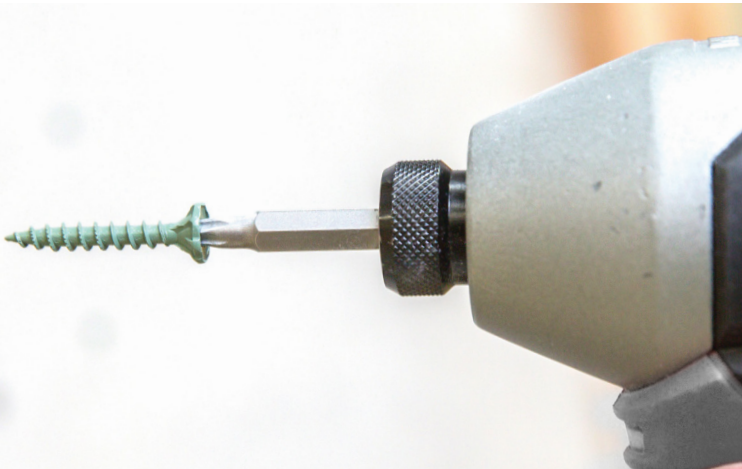
Backer-On® cement screws are designed for attaching HardieBacker® cement board and Rock-On® cement board screws are designed for attaching Durock® cement board to wood or light gauge steel studs. The patented serrated head design countersinks for a flush finish even at angle, providing a smooth surface for tile installation. The T-25 Star Drive recess provides Stikfit™ for one-handed installation. Climacoat corrosion resistant finish prevents rust from bleeding into grout. Making it perfect for use in high moisture areas such as bathrooms and kitchens.

Backer-On® and Rock-On® cement board screws comply with ANSI standards for cement board installation as specified by cement board manufacturers. Cement board manufacturers require ANSI compliance in order to remain eligible for warranty.

- **Serrated Head:** Designed to drive flush even at an angle
- **Star Drive with T-25 Bit:** Provides Stikfit™ for easy one-handed installation and eliminates cam-outs
- **Hi-Lo / Single Threads:** Starts quickly and drives smooth in cement boards
- **Sharp Points:** Offers immediate pick-up and eliminates the need to pre-drill
- **Climacoat Finish:** Corrosion resistant for preventing rust from bleeding into tile

BACKER-ON® ROCK-ON®

U.S (Std.) Size (Dia. x Length)	Pro Pack Part No.	Pro Pack Pail Qty.	Handy Pack Part No.	Handy Pack Ctn. Size/Qty.
BACKER-ON® ROCK-ON® SCREWS				
#9 x 1-1/4"	23505	750	23500	M/185
#9 x 1-5/8"	23515	575	23510	M/140
#9 x 2-1/4"			23520	M/100



APPLICATIONS:

- Attaching fiber cement board to wood or light gauge steel framing
- Attaching fiberglass reinforced cement board to wood or light gauge steel framing

Pro Tip: Standard roofing nails, dry wall screws, and other alternatives to cement board screws are typically not specified by cement board manufacturers and not ANSI compliant.

E-Z ANCOR® DRYWALL ANCORS



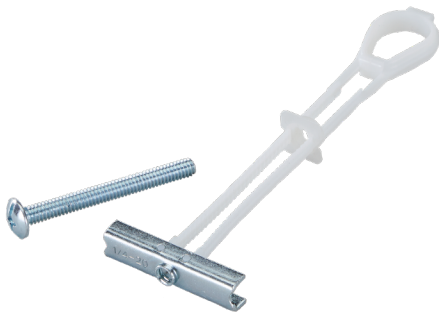
E-Z Anchor® Twist-N-Lock



E-Z Anchor® Stud Solver



E-Z Anchor® Toggle Lock



**E-Z Anchor® Heavy Duty
Toggle Lock**

EASY TO INSTALL WITH STRONG HOLDING POWER

E-Z Ancors® are ideal for hanging accessories, signs, fixtures, and shelving units on drywall. Designed to self-drill flush into drywall for easy and fast installations. No pre-drilling necessary. The threads are formed to provide increased stability and a secure hold.

E-Z Anchor® Twist-N-Lock is designed for light to medium-duty applications. The audible click provides confirmation of the anchor being firmly set. Threads cut deeply to resist pull-out and provide a secure hold.

E-Z Anchor® Stud Solver is designed for light to medium-duty applications. Installs anywhere on a wall, even if you hit a wood stud behind the drywall. Threads cut deeply to resist pull-out and provide a secure hold.

E-Z Anchor® Toggle Lock is designed for heavy-duty drywall applications. The superior 1-piece assembly prevents losing extra pieces behind the wall. The toggle bar swivels easily during assembly to provide a secure hold.

Buildex® Stucco Anchor is designed for light to medium-duty applications in stucco. The zinc plating is designed to be durable in exterior and interior applications. Kits include a drill bit for installation.

E-Z Anchor® Heavy Duty Drywall Toggle Anchors are designed for medium to heavy-duty hollow wall applications. The metal toggle bar clamps the wall providing an even and secure hold. The flexible plastic straps allow the toggle bar to swivel for easy installation.

- **No Pre-Drilling:** Screws directly into drywall with a Phillips screwdriver
- **Self-Piercing Point:** Positions anchor in desired location without slipping and starts self-drilling faster
- **Clean Finish:** Installs flush into drywall
- **Strong Holding Power:** Prevents loose connections and items from wobbling



U.S (Std.) Size (Max Load)	Lg. Pack Part No.	Lg. Pack Qty.	Med. Pack Part No.	Med Pack Qty.	Small Pack Part No.	Small Pack Qty.
E-Z ANCOR TWIST-N-LOCK ANCHORS						
50 lbs.	25350	50	25200	25	11353	6
75 lbs.	25310	50	25210	20	11364	4
E-Z ANCOR STUD SOLVER ANCHORS						
40 lbs.	25325	50	25225	25	25125	4
50 lbs.	25316	50	25216	20	29503	5
E-Z ANCOR / E-Z TOGGLE LOCK ANCHOR						
100 lbs.	25320	25	25220	10	10006	2
BUILDEX® STUCCO ANCHORS						
3/16"x 1-1/2"Hex Hd			31810	25	31710	4
3/16"x 1-1/2"Flat Hd			31820	25	31720	4
1/4"x 2-7/8"			31840	25	31740	4
E-Z ANCOR HEAVY DUTY TOGGLE ANCOR						
110 lbs. - 3/16" Bolt			25730	25	25720	10
120 lbs. - 1/4" Bolt			25731	25	25721	10

E-Z ANCOR CONTRACTOR PACKS		
U.S (Std.) Size (Max Load)	Contractor Pack Part No.	Contractor Pack Qty.
E-Z ANCOR CONTRACTOR TWIST-N-LOCK ANCHORS		
75 lbs.	25410	100
E-Z ANCOR CONTRACTOR STUD SOLVER ANCHORS		
50 lbs.	25616	100
E-Z ANCOR TWIST-N-LOCK AND STUD SOLVER ANCHORS COMBO		
50 lbs./75 lbs.	25600	25/25

Warning: Do not use Twist-N-Lock or Stud Solver anchors for ceiling applications. Do not use for mounting televisions. Load ratings are for items hung flush to the wall. Load ratings decrease when hanging items that project from the wall.



APPLICATIONS:

For Mounting:

- Picture Frames
- Shelving
- Mounting Brackets
- Hooks
- And more

FASTENER APPLICATION INFORMATION

ITW's Residential and Renovation Construction product lines are used in a variety of fastening applications. When choosing a fastener for a particular application, consideration needs to be made regarding its environment, particularly when exposed to moisture, treated lumber, dissimilar materials, and/or marine environments. These coating and material guidelines are not exhaustive and individual application conditions need to be considered prior to design or use.

For more assistance, please contact Customer Service at (877) 489-2726.

ENVIRONMENTAL CONDITION QUICK REFERENCE¹

Product Line	Coating	Interior ²	Exterior, Protected ³	Exterior, Exposed ⁴	Freshwater/ Coastal ⁵	Marine/High Chloride ⁶
Paslode	Brite	X				
	Electro galvanization	X				
	Hot Dip Galvanization	X	X	X		
	Mechanical Galvanization	X	X	X		
	HDG PLUS	X	X	X		
	304 Stainless Steel	X	X	X	X	
	Aluminum	X	X	X		
Tapcon	Blue Climaseal	X	X			
	Black Climaseal	X	X			
	White Ultrashield	X	X	X		
	Silver Ultrashield	X	X	X		
	410 Stainless Plus Ultrashield	X	X	X		
Red Head	Zinc Electroplate	X				
	Hot Dip Galvanization	X	X	X		
Ramset	Zinc Plated	X				
	Ramguard	X	X			
GRK	Zinc Electroplate with Painted Head	X				
	Climatek	X	X	X		
	White Climatek	X	X	X		
	Black Climatek	X	X	X		
	Deck Elite	X	X	X		
	305 Stainless Steel	X	X	X	X	
	316 Stainless Steel	X	X	X	X	X
Rock-On/Backer-On	Climacoat	X				
TEKS	Zinc Electroplate	X				
	Gray Spex	X	X			
	TEKS Climacoat	X	X	X		

1. For cases when the environmental condition is not known, it is recommended to conservatively choose a fastener with a higher level of corrosion resistance.
2. Dry, interior conditions, with minimal direct moisture contact.
3. Outdoor conditions that result in intermittent water exposure. Applications are either covered by features such as roofing or lap siding or temporarily exposed to precipitation but allow for quick drainage.
4. Outdoor conditions that result in exposure to the full effects of weather.
5. Conditions where fasteners are regularly exposed to freshwater, or in regions of high humidity, such as being within 1 and 15 miles of a coast.
6. Within one (1) mile of seawater coast or direct exposure to chlorides, such as de-icing salts.

WOOD APPLICATION QUICK REFERENCE

Product Line	Coating	Untreated Wood ¹	Chemically Treated Wood, Above Ground ²	Chemically Treated Wood, Ground Contact ³	Naturally Protected Wood ⁴
Paslode	Brite	X			
	Electrogalvanization	X			
	Hot Dip Galvanization	X	X	X	X ⁵
	Mechanical Galvanization	X	X	X	X
	HDG PLUS	X	X	X	X
	304 Stainless Steel	X	X	X	X
	Aluminum	X			X
Tapcon	Blue Climaseal	X			
	Black Climaseal	X			
	White Ultrashield	X			
	Silver Ultrashield	X			
	410 Stainless Plus Ultrashield	X			
Red Head	Zinc Electroplate	X			
	Hot Dip Galvanization	X	X	X	X ⁵
Ramset	Zinc Plated	X			
	Ramguard	X	X		
GRK	Zinc Electroplate with Painted Head	X			
	Climatek	X	X ⁶	X ⁶	
	Black Climatek	X	X ⁶	X ⁶	
	White Climatek	X	X ⁶	X ⁶	
	Deck Elite	X	X	X	
	305 Stainless Steel	X	X	X	X
	316 Stainless Steel	X	X	X	X
Rock-On/Backer-On	Climacoat	X			
TEKS	Zinc Electroplate	X			
	Gray Spex	X			
	TEKS Climacoat	X	X		

1. Sawn or processed lumber that has not undergone chemical treatment.
2. Wood with preservative treatment such as ACQ or CA, with above ground contact according to AWWA Use Category UC3A.
3. Wood with preservative treatment such as ACQ or CA, with ground contact according to AWWA Use Category UC4A or ICC-ES AC257 Exposure Condition 3.
4. Wood species such as cedar or redwood that are naturally protected from environmental decay.
5. Interaction between naturally protected woods and HDG coatings may result in staining.
6. See ICC-ES ESR-3201 or ESR-2442 for details on approved preservative types.

LIABILITY AND WARRANTIES

Mechanical Fastening Warranty: (Includes GRK Fasteners, Tapcon, Red Head, Ramset, Teks, Rock-On, Backer-On, and E-Z Ancor). ITW Brands warrants that these products are free from defects in material and workmanship. ITW Brands's sole liability for any breach of this warranty shall be to replace this product or refund the purchase price.

Liability: Claims against GRK or ITW Brands shall be limited to a refund or credit for the price billed or paid for faulty or incorrect merchandise. Seller shall not be responsible for buyer's manufacturing costs, labor, alternate purchases, extra freight, replating, plating, lost profit, good will, recall costs, or other incidental or consequential damages.

Refunds/Replacements: In order to request a refund or replacement, please contact ITW Customer Service at BrandsCS@itwbrands.com or 877-489-2726 to start the process.

THERE ARE NO UNDERSTANDINGS, AGREEMENTS, REPRESENTATIONS, OR ADDITIONAL WARRANTIES, EXPRESSED OR IMPLIED (INCLUDING ANY REGARDING WARRANTIES OF MERCHANTABILITY OR FITNESS FOR A PARTICULAR PURPOSE), NOT SPECIFIED HEREIN, RESPECTING ANY SALE OF PRODUCTS BY GRK FASTENERS™ (TO THE EXTENT PERMITTED BY LAW).

LIABILITY AND WARRANTIES

GRK Fasteners™ (“GRK”) is a distributor of commercial-grade fasteners. The parts that we supply are quality inspected by independent labs.

We maintain lot traceability on all products listed in this catalog as long as they are in their original bulk boxes. Certifications are maintained on all fasteners.

Hydrogen Embrittlement: GRK takes measures during production of all fasteners to mitigate hydrogen embrittlement, including post-coating baking. These processes, however, do not guarantee that hydrogen embrittlement will not still be present or that it will not occur at a later date while in service. Specialized testing or a substitute part may be required, depending on the application.

GRK Warranty: GRK warrants to the first retail purchaser that its Climatek™ coated, Deck Elite coated, and stainless steel screws will not rust under normal environmental conditions when used in accordance with the recommendations listed in this catalog. This warranty is not transferable. Visit www.grkfasteners.com for more information.



paslode.com



grkfasteners.com



tapcon.com



backeronrockon.com



ramsetpat.com



teksscrews.com



redheadanchoring.com



easyanchors.com

FULL-LINE CATALOG



Part #99915
January 2025

ITW CONSTRUCTION | RESIDENTIAL AND RENOVATION
Glenview, IL 60025